

## Service Valves & Electrical Pedestals



Working with the **INSTOCK**® Lab Team is Fast and Easy

### Using this catalog

Each catalog focuses on a segment of the over 600 commonly used lab furnishing products. This format will help you to locate the products that you need quickly and easily.

### Product Organization

Products have been clearly presented using pictures, specifications, descriptive information and performance data to assist with selection.

### Next Steps

If you wish to place an order please [CONTACTUS@LFSYSTEMS.com](mailto:CONTACTUS@LFSYSTEMS.com) or use the Excel Order Form (link) that follows the list of catalogs.  
(Note: The order form link requires an Excel Spreadsheet app.)

## Laboratory Ball Valves

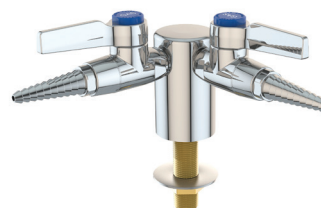
- Laboratory Ball Valves are deck mounted turret base
- They are chrome plated brass
- It is quarter-turn open/close.
- The lever is forged brass with color-coded index button/cap.

### One Turret



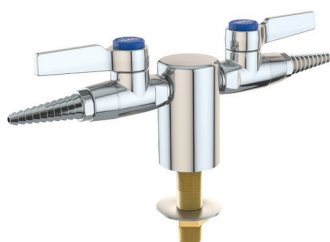
Part Number	Service
L4200-131WSA-G	Gas
L4200-131WSA-A	Air
L4200-131WSA-N	Nitrogen
L4200-131WSA-V	Vacuum

### Two Turrets, 90°



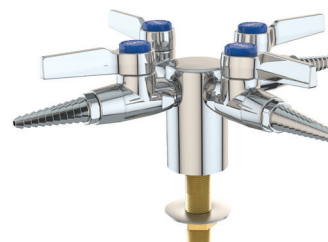
Part Number	Service
L4200-132AWSA-G	Gas
L4200-132AWSA-A	Air
L4200-132AWSA-N	Nitrogen
L4200-132AWSA-V	Vacuum

### Two Turrets, 180°



Part Number	Service
L4200-132SWSA-G	Gas
L4200-132SWSA-A	Air
L4200-132SWSA-N	Nitrogen
L4200-132SWSA-V	Vacuum

### Four Turrets



Part Number	Service
L4200-134WSA-G	Gas
L4200-134WSA-A	Air
L4200-134WSA-N	Nitrogen
L4200-134WSA-V	Vacuum

# Service Valves

## Laboratory Needle Valves

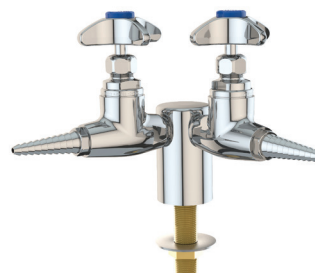
- Laboratory needle valves are deck mounted turret base.
- They are straight pattern forged brass.
- It has a floating stainless steel needle and replaceable stainless steel seat.
- The handle is a four-arm handle with a color coded index button/cap.

### One Turret



Part Number	Service
L2880-131WSA-G	Gas
L2880-131WSA-A	Air
L2880-131WSA-N	Nitrogen
L2880-131WSA-V	Vacuum

### Two Turrets, 90°



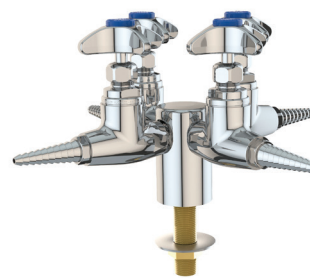
Part Number	Service
L2880-132AWSA-G	Gas
L2880-132AWSA-A	Air
L2880-132AWSA-N	Nitrogen
L2880-132AWSA-V	Vacuum

### Two Turrets, 180°



Part Number	Service
L2880-132SWSA-G	Gas
L2880-132SWSA-A	Air
L2880-132SWSA-N	Nitrogen
L2880-132SWSA-V	Vacuum

### Four Turrets



Part Number	Service
L2880-134WSA-G	Gas
L2880-134WSA-A	Air
L2880-134WSA-N	Nitrogen
L2880-134WSA-V	Vacuum

# Electrical Pedestals

## Single Gang Electrical Pedestal



- This unit is single gang, double faced.
- It is 120 V and 20 amp.
- Supplied with black outlets and stainless steel cover plates.
- The box is cast aluminum and is powder coated with a black textured epoxy finish.

Part Number	Type
E433WS	Standard Outlets
E433WS-GFI	GFI Outlets

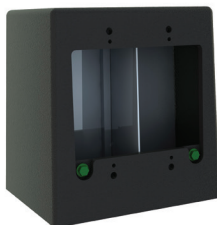
## Double Gang Electrical Pedestal



- This unit is double gang, double faced.
- It is 120 V and 20 amp.
- Supplied with black outlets and stainless steel cover plates.
- The box is cast aluminum and is powder coated with a black textured epoxy finish.

Part Number	Type
E633WS	Standard Outlets
E633WS-GFI	GFI Outlets

## Custom Electrical Pedestal



- This electrical pedestal is double faced and can accommodate a variety of styles and configurations.
- As many as 4 duplex outlets can be installed.
- The chambered design minimizes RF interference when combining electrical and data outlets in this fixture.
- Outlets and cover plates supplied separately.
- The box is cast aluminum and is powder coated with a black textured epoxy finish.

Part Number	Type
E800WS	Custom





**Quick Delivery Program**

**Quick Delivery Lab Furnishings**



249 Old Churchmans Road  
New Castle, Delaware 19720

PHONE: 302-322-0460

EMAIL: [contactus@lfsystems.com](mailto:contactus@lfsystems.com)

WEB: [www.LFSYSTEMS.com](http://www.LFSYSTEMS.com)

