

## Quick Delivery Lab Furnishings Catalog



### Painted Steel Casework

Working with the **INSTOCK**® Lab Team is Fast and Easy

### Using this catalog

Each catalog focuses on a segment of the over 600 commonly used lab furnishing products. This format will help you to locate the products that you need quickly and easily.

### Product Organization

Products have been clearly presented using pictures, specifications, descriptive information and performance data to assist with selection.

### Next Steps

If you wish to place an order please [CONTACTUS@LFSYSTEMS.com](mailto:CONTACTUS@LFSYSTEMS.com) or use the Excel Order Form (link) that follows the list of catalogs.  
(Note: The order form link requires an Excel Spreadsheet app.)

## Painted Steel Casework

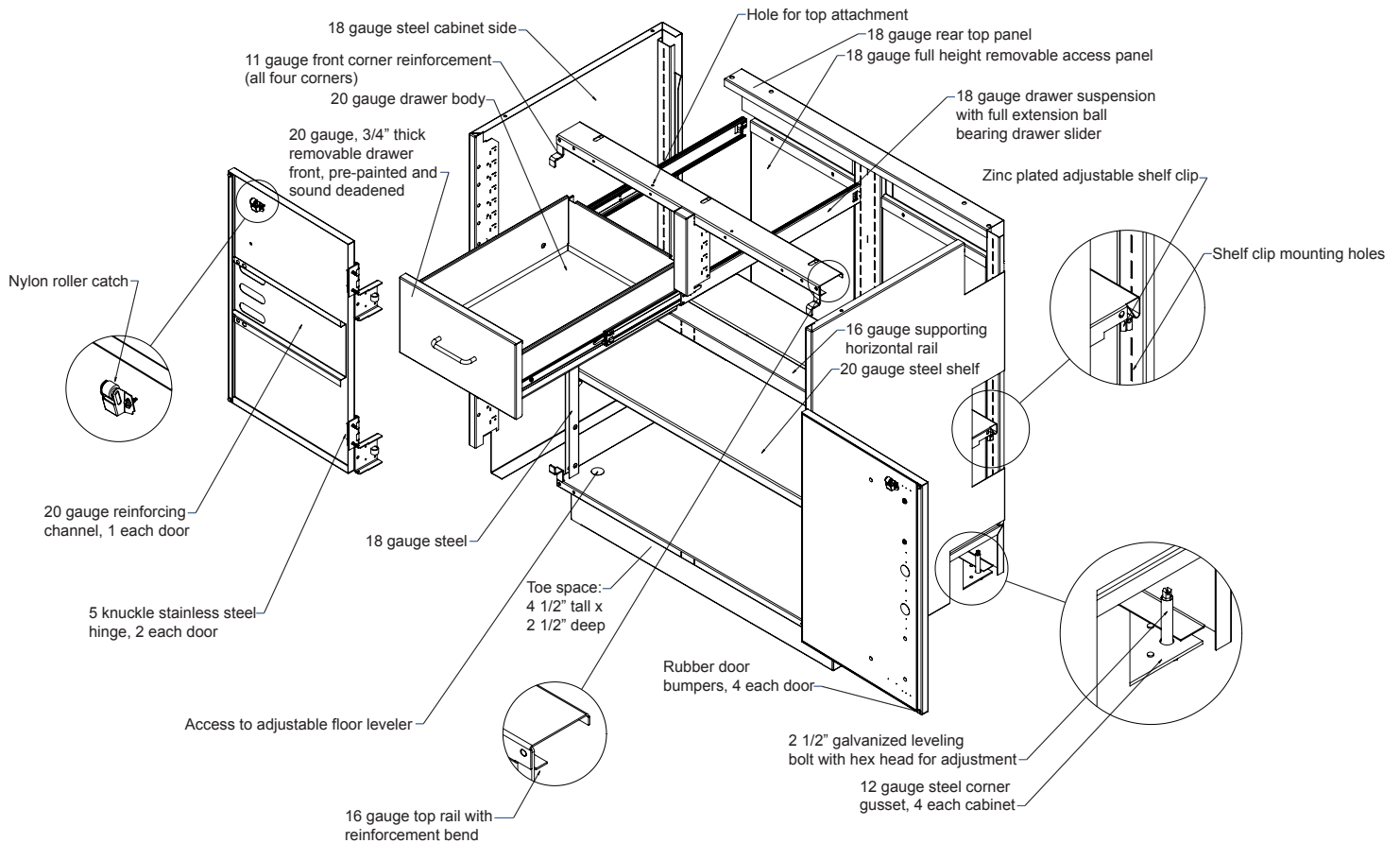
### CornerStone *INSTOCK*® Standard Product Features:

- Inset style casework
- Modular design allows for simple field conversion from inset to overlay, door and drawer re-configurations and hardware component changes
- Durable construction provides SEFA 8 Metal compliant load-bearing capacity for years of dependable usage
- Drawer suspension is 100 lb. full extension
- ***INSTOCK*** “Pearl White” color is a urethane powder coating that provides superior chemical and abrasion resistance
- Products are SEFA 8 tested and approved by an independent third party



 **CornerStone**®





## Design Appearance:

- Our quick delivery cabinetry is offered in a flush inset style. All cabinet component parts of the unit are manufactured ensuring uniformity, interchangeability and accurate alignment.

## Color:

- Our quick delivery cabinetry is offered in a neutral color of Pearl White

## Field Convertible:

- Field convertible design allows for conversion of cabinet door and drawer front styles, drawer body suspension and cabinet horizontal and vertical rails, with the use of simple hand tools.

## LEED Compliance:

- Environmental compliant paints, glues and adhesives are specifically formulated to safeguard indoor air quality

## Industry Compliance:

- SEFA 8 Metal, NFPA 30, UL listed and FM approved

## Drawer Slide:

- 100 lbs. full extension, Standard

## Standard Features:

- Stainless Steel Wire Pull
- Stainless Steel Five Knuckle Hinge
- Nylon Roller Door Catch

## CornerStone Door and Drawer Size Code

| Mod Code       | Height             |
|----------------|--------------------|
| <b>Drawers</b> |                    |
| 3M             | 3.649" (9.3 cm)    |
| 4M             | 4.909" (12.5 cm)   |
| 6M             | 7.429" (18.9 cm)   |
| 8M             | 9.949" (25.3 cm)   |
| 9M             | 11.209" (28.5 cm)  |
| 10M            | 12.469" (31.7 cm)  |
| <b>Doors</b>   |                    |
| 15M            | 18.769" (47.7 cm)  |
| 18M            | 22.549" (57.3 cm)  |
| 20M            | 25.069" (63.7 cm)  |
| 22M            | 27.589" (70.1 cm)  |
| 24M            | 30.109" (76.5 cm)  |
| 28M            | 35.149" (89.3 cm)  |
| 37M            | 47.749" (121.3 cm) |
| 63M            | 79.249" (201.3 cm) |



## Painted Steel Casework

### INSTOCK® Steel Laboratory Casework

The **INSTOCK** program is ready when you are and is designed to ship complete laboratories within 10 days.

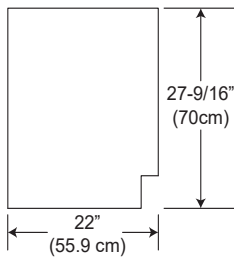
Our **INSTOCK** program provides you an extensive selection of lab furnishings that are available in a matter of days.\*

All **INSTOCK** steel cabinets and chemical hoods have a powder coated “Pearl White” finish that is SEFA 8 compliant.\*\* A wide range of other colors and cabinet styles are available in 6-8 weeks.

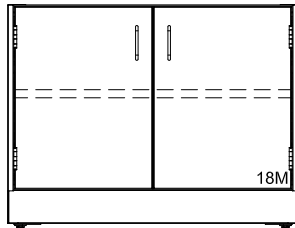


\*Most **INSTOCK**® items ship in 10 days. All items are subject to availability at the time of the order. Large quantity orders may require longer lead times.

\*\*For a color sample of Pearl White email: [orders@instocklabs.com](mailto:orders@instocklabs.com)



## Door Cabinets

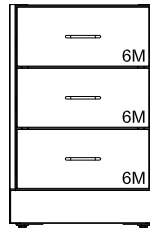


JTP163-36 36" W (91.4 cm)

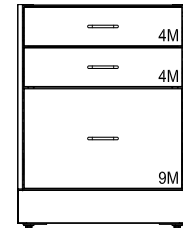
## CornerStone Sitting Height Base Cabinet

- Order work surfaces separately
- Provided without locks
- 27 9/16" (70 cm) Tall
- Standard Color: Pearl White
- All door and combination cabinets have a removable back
- All drawer cabinets have a cutout for service access

## Drawer Cabinets

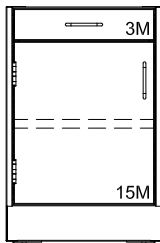


JTP174-18P 18" W (45.7 cm)



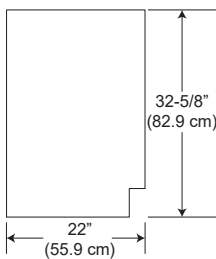
JTP070-24P 24" W (61 cm)

## Door and Drawer Cabinets

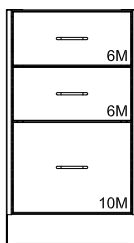


### Left Hinged

JTP169-18P 18" W (45.7 cm)



## Drawer Cabinets

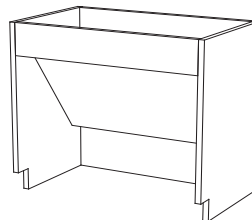


JTP925-18P 18" W (45.7 cm)

## CornerStone ADA Height Base Cabinet

- Order work surfaces separately
- Provided without locks
- 32 5/8" (82.9 cm) Tall
- Standard Color: Pearl White
- All door and combination cabinets have a removable back
- All drawer cabinets have a cutout for service access

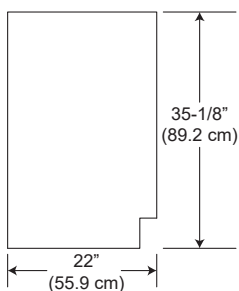
## Sink Cabinet



Assembly Required

JTP981ACC-36 36" W (91.4 cm)

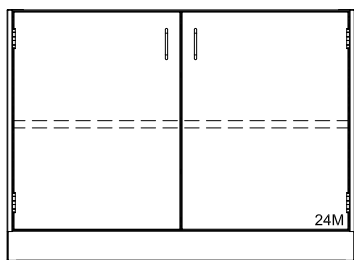
# Painted Steel Casework



## CornerStone Standing Height Base Cabinet

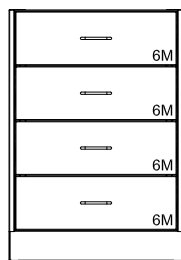
- Order work surfaces separately
- Provided without locks
- 35 1/8" (89.2 cm) Tall
- Standard Color: Pearl White
- All door and combination cabinets have a removable back
- All drawer cabinets have a cutout for service access

## Door Cabinets

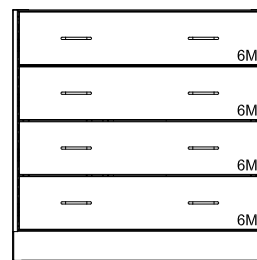


|           |                  |
|-----------|------------------|
| JTP103-30 | 30" W (76.2 cm)  |
| JTP103-36 | 36" W (91.4 cm)  |
| JTP103-48 | 48" W (121.9 cm) |

## Drawer Cabinets

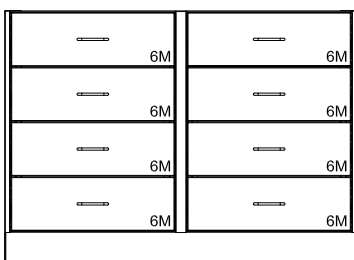


|            |                 |
|------------|-----------------|
| JTP122-18P | 18" W (45.7 cm) |
| JTP122-24P | 24" W (61 cm)   |



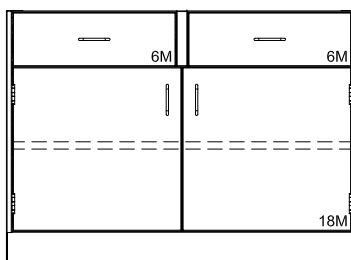
|            |                 |
|------------|-----------------|
| JTP121-36P | 36" W (91.4 cm) |
|------------|-----------------|

## Drawer Cabinets

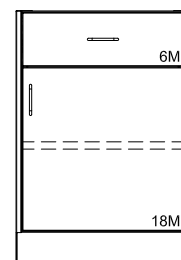


|            |                  |
|------------|------------------|
| JTP124-48P | 48" W (121.9 cm) |
|------------|------------------|

## Door/Drawer Cabinets

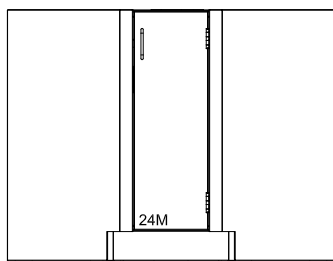


|            |                  |
|------------|------------------|
| JTP106-36P | 36" W (91.4 cm)  |
| JTP106-42P | 42" W (106.7 cm) |
| JTP106-48P | 48" W (121.9 cm) |

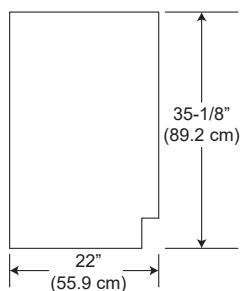


| Right Hinged |                 |
|--------------|-----------------|
| JTP118-18P   | 18" W (45.7 cm) |
| JTP118-24P   | 24" W (61 cm)   |
| Left Hinged  |                 |
| JTP119-18P   | 18" W (45.7 cm) |
| JTP119-24P   | 24" W (61 cm)   |

## Corner/Sink Cabinet



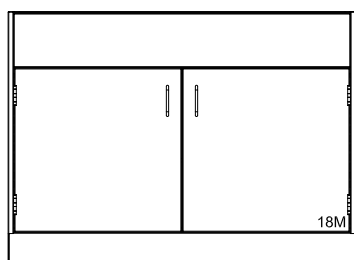
| Right Hinged |                     |
|--------------|---------------------|
| JTP190-32SE  | 32-7/8" W (83.5 cm) |



## CornerStone Standing Height Base Cabinet

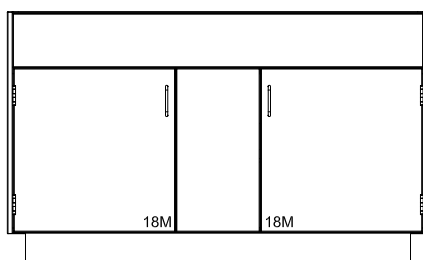
- Order work surfaces separately
- Provided without locks
- 35 1/8" (89.2 cm) Tall
- Standard Color: Pearl White
- All door and combination cabinets have a removable back
- All drawer cabinets have a cutout for service access

## Sink Cabinets



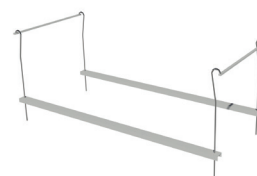
|           |                  |
|-----------|------------------|
| JTP181-36 | 36" W (91.4 cm)  |
| JTP181-48 | 48" W (121.9 cm) |

## End Island Sink Cabinets



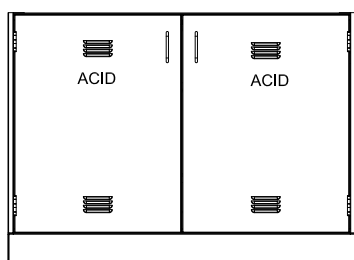
|           |                  |
|-----------|------------------|
| JTP186-52 | 52" W (132.1 cm) |
| JTP186-58 | 58" W (147.3 cm) |

## Sink Supports



|          |                  |
|----------|------------------|
| JP535-36 | 36" W (91.4 cm)  |
| JP535-48 | 48" W (121.9 cm) |
| JP535-52 | 52" W (132.1 cm) |
| JP535-58 | 58" W (147.3 cm) |

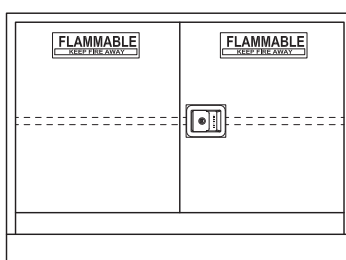
## Acid Storage Cabinets



- Full-Height doors are lined with 1/8" thick polyethylene
- Chemical resistant 3/16" thick molded Polyethylene lining with coved corners and 2" lip at front of cabinet opening
- Includes vent kit
- One half-depth shelf

|                              |                  |
|------------------------------|------------------|
| JTP185-24GG<br>(Left Hinged) | 24" W (61 cm)    |
| JTP188-36GG                  | 36" W (91.4 cm)  |
| JTP188-48GG                  | 48" W (121.9 cm) |

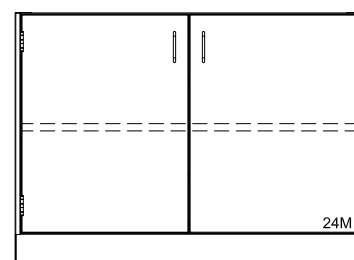
## Solvent Storage Cabinets



- Construction meets requirements listed by UFC, OSHA, and NFPA No. 30-1993
- Two 2" pipe threaded vent outlets on back
- Rear and top access panels
- Lock is included
- Self-closing

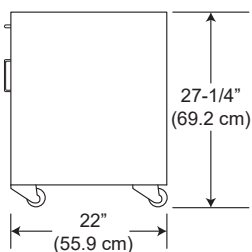
|                                 |                  |
|---------------------------------|------------------|
| JTP189-24SLAS<br>(Right Hinged) | 24" W (61 cm)    |
| JTP189-36SLASY                  | 36" W (91.4 cm)  |
| JTP189-48SLASY                  | 48" W (121.9 cm) |

## Standard Hood Cabinets



|           |                  |
|-----------|------------------|
| JTP103-30 | 30" W (76.2 cm)  |
| JTP103-36 | 36" W (91.4 cm)  |
| JTP103-48 | 48" W (121.9 cm) |

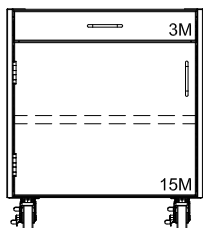
# Painted Steel Casework



## CornerStone Mobile Cabinet

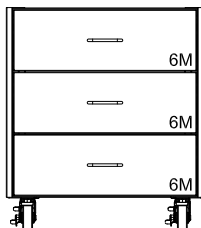
- Order work surfaces separately
- Provided without locks
- 27 1/4" Tall and 22" Deep
- Standard Color: Pearl White
- Cabinets include 4 each heavy duty 3" casters, the front 2 casters are locking
- Drawer interlock system included and counter weighted anti-tip design.

## Combination Cabinets

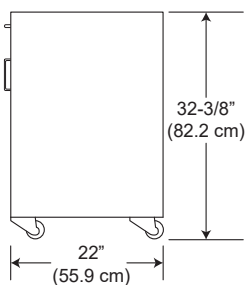


|            |                 |
|------------|-----------------|
| JTP1068-18 | 18" W (45.7 cm) |
| JTP1068-24 | 24" W (61 cm)   |

## Drawer Cabinets



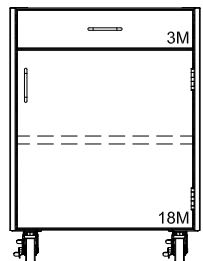
|            |                 |
|------------|-----------------|
| JTP1072-18 | 18" W (45.7 cm) |
| JTP1072-24 | 24" W (61 cm)   |



## CornerStone Mobile Cabinet

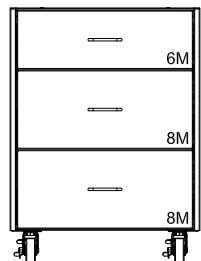
- Order work surfaces separately
- Provided without locks
- 32 3/8" Tall and 22" Deep
- Standard Color: Pearl White
- Cabinets include 4 each heavy duty 3" casters, the front 2 casters are locking
- Drawer interlock system included and counter weighted anti-tip design.

## Combination Cabinets



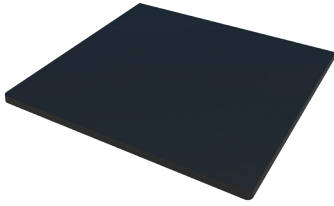
|            |                 |
|------------|-----------------|
| JTP1018-18 | 18" W (45.7 cm) |
| JTP1018-24 | 24" W (61 cm)   |

## Drawer Cabinets



|            |                 |
|------------|-----------------|
| JTP1021-18 | 18" W (45.7 cm) |
| JTP1021-24 | 24" W (61 cm)   |

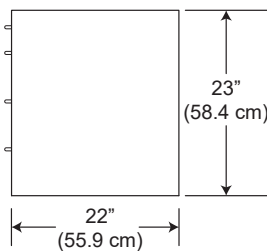




## Mobile Cabinet Work Surface

- Work surface is 3/4" thick black phenolic resin that provide a 1" overhang on the front and a 1/2" overhang at the rear and sides.
- It adds 3/4" to the overall height of the cabinet.
- There is a grip notch included under the front edge of the work surface to help maneuver cabinet

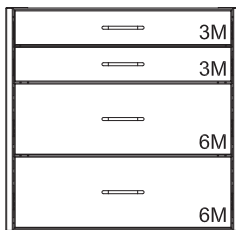
| Part Number | For use with:                     |
|-------------|-----------------------------------|
| MWS-18      | 18" (45.7 cm) wide mobile cabinet |
| MWS-24      | 24" (61 cm) wide mobile cabinet   |



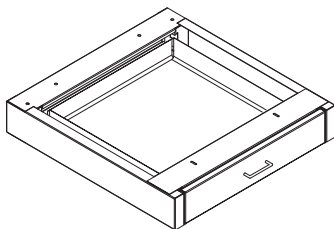
## CornerStone Suspended Cabinet

- 23" Tall and 22" Deep
- Standard Color: Pearl White
- Designed to be hung from any of our table systems
- Each suspended cabinet is furnished with complete hanging hardware.

## Drawer Cabinets



|           |                 |
|-----------|-----------------|
| JTP820-18 | 18" W (45.7 cm) |
| JTP820-24 | 24" W (61 cm)   |

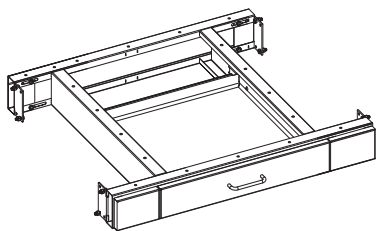


|         |                 |
|---------|-----------------|
| PPD1822 | 18" W (45.7 cm) |
|---------|-----------------|

## CornerStone Suspended Pencil Drawer

- 3 7/8" Tall and 22" Deep
- Standard Color: Pearl White
- Designed to be hung from any of our table systems
- Each suspended cabinet is furnished with complete hanging hardware.

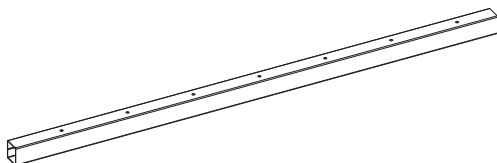
## Painted Steel Casework



### CornerStone Apron Frame with Drawer

- Apron frame is 4" (11.4 cm) tall
- Use to span knee space area between two cabinets
- Attachment hardware included
- Standard color: Pearl White

| Part Number    | Width         | Depth         |
|----------------|---------------|---------------|
| JTPTBA-3022-1P | 30" (76.2 cm) | 22" (55.9 cm) |
| JTPTBA-3622-1P | 36" (91.4 cm) | 22" (55.9 cm) |

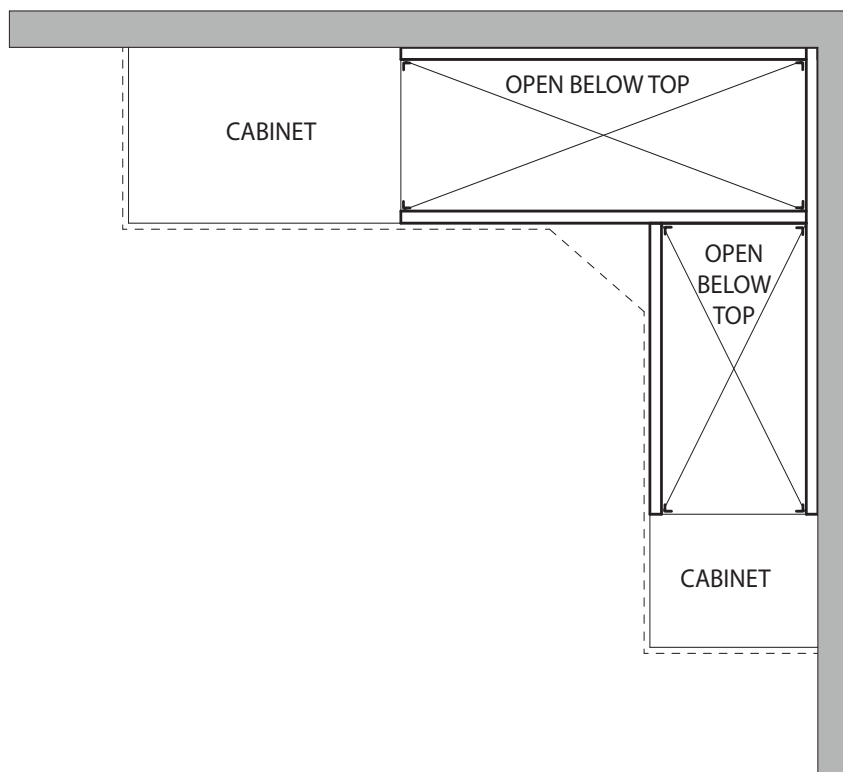


### CornerStone Apron Rail

- Apron rails are 2" tall and 2" deep
- Used to span and support knee space areas between two cabinets
- Attachment hardware is included
- Standard color: Pearl White
- Can be cut to fit in the field

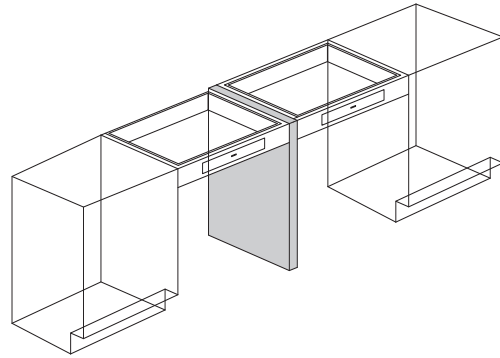
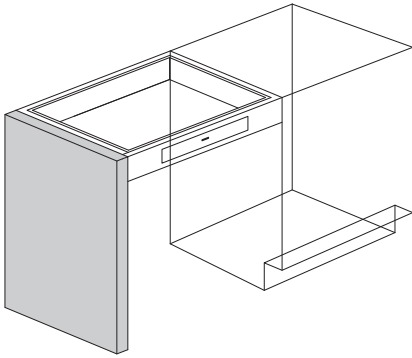
| Part Number | Width          |
|-------------|----------------|
| JPTBR-3002  | 30" (76.2 cm)  |
| JPTBR-3602  | 36" (91.4 cm)  |
| JPTBR-4802  | 48" (121.9 cm) |
| JPTBR-7202  | 72" (182.9 cm) |

### Example use of Rails

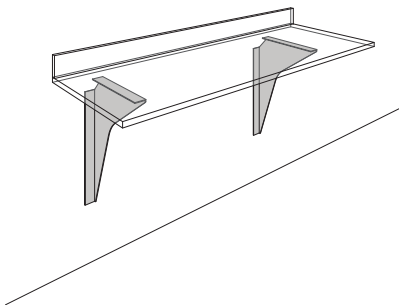


## Panel End Supports

- Use in place of a cabinet at one end of a cabinet run to support drawer frames or apron rails
- Can be used to support the intersection of two aprons or rails
- Each panel has 2 leveling feet and is 2" (5.1 cm) wide
- Standard Color: Pearl White



| Part Number            | Depth         | Height            |
|------------------------|---------------|-------------------|
| <b>Sitting Height</b>  |               |                   |
| JPTPO-2822             | 22" (55.9 cm) | 27 9/16" (70 cm)  |
| <b>ADA Height</b>      |               |                   |
| JPTPO-3222             | 22" (55.9 cm) | 32 5/8" (82.8 cm) |
| <b>Standing Height</b> |               |                   |
| JPTPO-3522             | 22" (55.9 cm) | 35 1/8" (89.2 cm) |

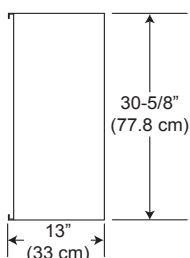


## Heavy Duty Wall Mount Bracket Countertop Support

- Used to support spans of work surface without structure mounted on the floor
- Adequate in-wall blocking is required.
- 11 gauge bracket has a 2" wide return flanges with mounting holes at the top and rear of the bracket
- Bracket is 24" tall and can be mounted at any chosen height
- Standard color: Pearl White

| Part Number | Depth         |
|-------------|---------------|
| FF-CTOP-18  | 18" (45.7 cm) |
| FF-CTOP-23  | 23" (58.4 cm) |

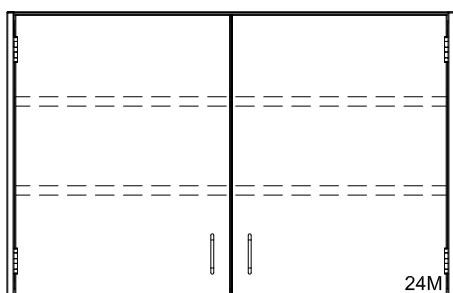
# Painted Steel Casework



## CornerStone Wall Cabinets

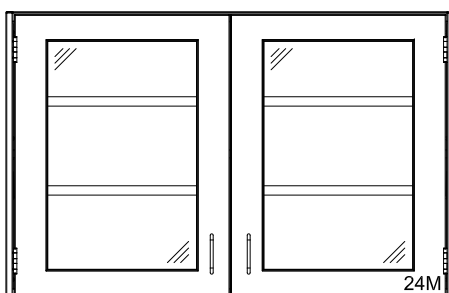
- Provided without locks
- 30 5/8" (77.8 cm) Tall x 13" (33 cm) Deep
- Standard Color: Pearl White
- Two adjustable shelves
- Flush Bottom

## Solid Door Wall Cabinets



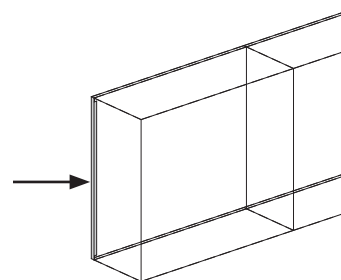
|           |                  |
|-----------|------------------|
| JTP203-36 | 36" W (91.4 cm)  |
| JTP203-48 | 48" W (121.9 cm) |

## Framed Glass Wall Cabinets



|           |                  |
|-----------|------------------|
| JTP206-36 | 36" W (91.4 cm)  |
| JTP206-48 | 48" W (121.9 cm) |

## Rear Wall Cabinet Filler

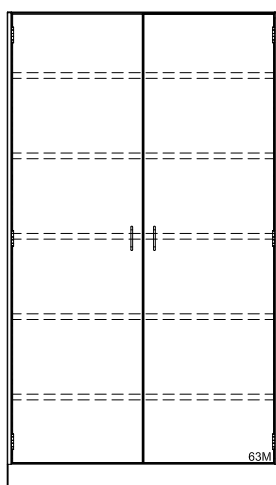


|              |
|--------------|
| JC1392N0124P |
|--------------|

## CornerStone Steel Solid Door Tall Cabinet

- Standard without locks
- Five shelves are included and are adjustable in half-inch increments
- Must be anchored to wall
- 84-5/16" Tall x 22" Deep
- Standard Color: Pearl White

## Solid Door Tall Cabinets

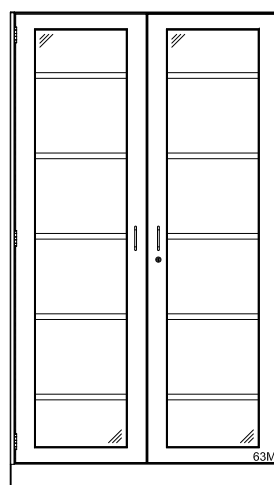


|           |                  |
|-----------|------------------|
| JTP303-36 | 36" W (91.4 cm)  |
| JTP303-48 | 48" W (121.9 cm) |

## CornerStone Steel Glass Door Tall Cabinet

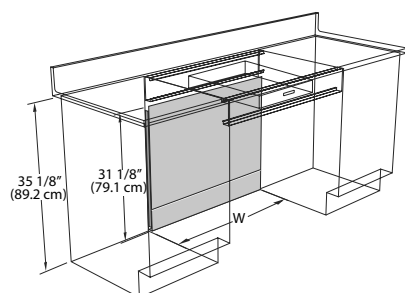
- Standard with locks
- Five shelves are included and are adjustable in half-inch increments
- Must be anchored to wall
- 84-5/16" Tall x 22" Deep
- Standard Color: Pearl White

## Framed Glass Door Tall Cabinets



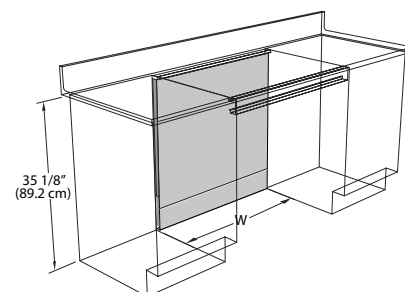
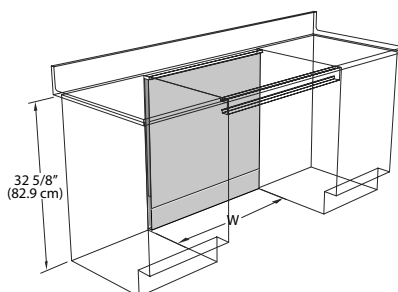
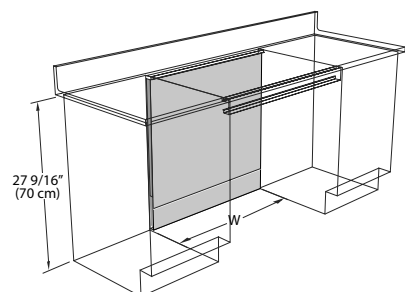
|            |                  |
|------------|------------------|
| JTP307-36L | 36" W (91.4 cm)  |
| JTP307-48L | 48" W (121.9 cm) |

## Knee Space Panels for use with Drawer Aprons



| Part Number            | Width         |
|------------------------|---------------|
| <b>Standing Height</b> |               |
| JKSH-3004GG            | 30" (76.2 cm) |
| JKSH-3604GG            | 36" (91.4 cm) |

## Knee Space Panels for use with 2" High Apron Rails



| Part Number           | Width                                      |
|-----------------------|--|
| <b>Sitting Height</b> |  |
| JKSL-ADJGG*           | ADJUSTABLE<br>12"-48"<br>(30.5 - 121.9 cm) |

| Part Number       | Width                                      |
|-------------------|--|
| <b>ADA Height</b> |  |
| JKSA-ADJGG*       | ADJUSTABLE<br>12"-48"<br>(30.5 - 121.9 cm) |

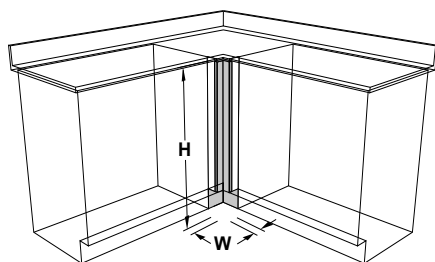
| Part Number            | Width                                      |
|------------------------|--|
| <b>Standing Height</b> |  |
| JKSH-30GG              | 30" (76.2 cm)                              |
| JKSH-36GG              | 36" (91.4 cm)                              |
| JKSH-ADJGG*            | ADJUSTABLE<br>12"-48"<br>(30.5 - 121.9 cm) |
| JKSH-72ADJGG*          | ADJUSTABLE<br>12"-72"<br>(30.5 - 182.9 cm) |

\* Cut to fit and includes slip fit trim angle



# Painted Steel Casework

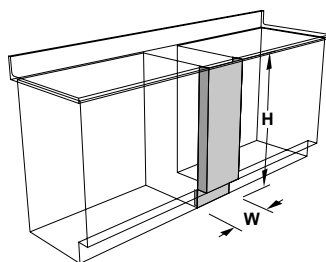
## Corner Fillers



| Part Number                      | Width                                   |
|----------------------------------|---|
| <b>Standing Height - 35 1/8"</b> |   |
| JFCH-01                          | 1" (2.5 cm)                             |
| JFCH-ADJ*                        | ADJUSTABLE<br>2"-12"<br>(5.1 - 30.5 cm) |

\* Cut to fit and includes slip fit trim angle

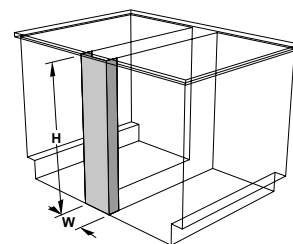
## Front Fillers Panels



- For use between adjacent base cabinets or between a cabinet and the wall

| Part Number                      | Width                     |
|----------------------------------|---------------------------|
| <b>Sitting Height - 27 9/16"</b> |                           |
| JFFL-ADJ*                        | 2"-18"<br>(5.1 - 45.7 cm) |
| <b>Standing Height - 35 1/8"</b> |                           |
| JFFH-01                          | 1" (2.5 cm)               |
| JFFH-04                          | 4" (10.2 cm)              |
| JFFH-08                          | 8" (20.3 cm)              |
| JFFH-ADJ*                        | 2"-18"<br>(5.1 - 45.7 cm) |

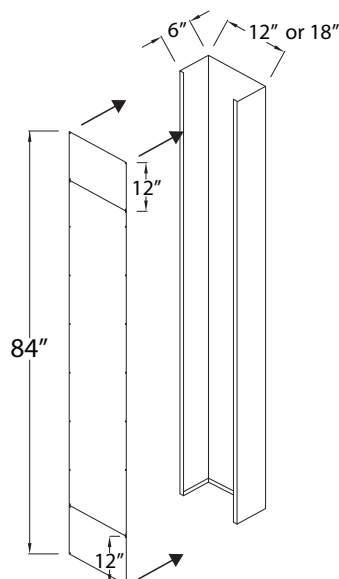
## Rear and Center Fillers Panels



- For use between back-to-back base cabinets or to close space at the rear of the cabinet

| Part Number                      | Width                       |
|----------------------------------|-----------------------------|
| <b>Sitting Height - 27 9/16"</b> |                             |
| JFRL-07                          | 7" (18.7 cm)                |
| <b>ADA Height - 32 5/8"</b>      |                             |
| JFRA-07                          | 7" (18.7 cm)                |
| <b>Standing Height - 35 1/8"</b> |                             |
| JFRH-01                          | 1" (3.5 cm)                 |
| JFRH-07                          | 7" (18.7 cm)                |
| JFRH-08                          | 8" (21.3 cm)                |
| JFRH-14                          | 14" (36.5 cm)               |
| JFRH-ADJ*                        | 2" - 18"<br>(5.1 - 45.7 cm) |

## Pipe Enclosures - Steel



- Used to provide a cover for pipes running from the ceiling to the work surface
- Can be used for island or perimeter locations
- Can support pegboards or water purification systems
- Cover is pre-punched for attachment and is furnished in three sections for ease of access after installation

| Part Number | Dimensions (W x D x H)                  |
|-------------|---|
| JP509-1284  | 12" x 6" x 84" (30.5 x 15.2 x 212.1 cm) |
| JP509-1884  | 18" x 6" x 84" (45.7 x 15.2 x 212.1 cm) |

## Adaptable Furniture Systems



When laying out your laboratory space, thought should be given to its future use, the changing needs of the occupants, their procedures & equipment. Adaptable lab furnishings have become an integral part of contemporary project layouts. Our lab table systems are designed and built to provide adaptability & sustainability. Our systems driven approach provides a family of products that work together as your lab grows or your needs change. We provide a fast, reliable, and value driven method to lab upfit and flexibility.





Quick Delivery Program

Quick Delivery Lab Furnishings



249 Old Churchmans Road  
New Castle, Delaware 19720

PHONE: 302-322-0460

EMAIL: [contactus@lfsystems.com](mailto:contactus@lfsystems.com)

WEB: [www.LFSYSTEMS.com](http://www.LFSYSTEMS.com)

