

# MOVEX®

# ME 50



**The ideal extractor for schools, nail salons and the electronics industry.**

With its optimal design, the Ø 2 inch Movex ME has a very low pressure drop, which provides many valuable benefits:

- Low pressure drop saves energy.
- Air flow noise is reduced.
- Lower pressure drop is achieved without selecting a larger diameter extractor.
- Lower pressure drop allows the ME to be combined with additional extraction systems.

Unique design and stable mounting brackets make the Movex ME your best choice.

Support for designing an effective system is available on page 5, and at [www.movexinc.com](http://www.movexinc.com) where you will find our design tool and CAD drawings.

*The Movex range also includes fans, accessories, automatic controls and filters suitable for local extraction.*

**LOCAL EXTRACTION**  
**Pure advantages**

## *Always choose a low pressure drop*

Lowest possible pressure drop is a quality aspect that always should be considered.

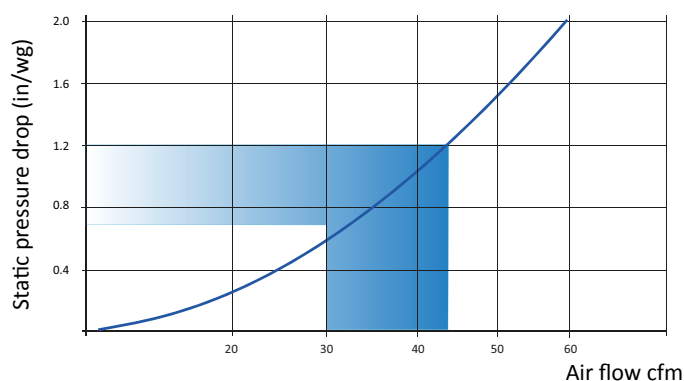
With its uniquely designed joint construction, the Movex ME combines maximum flexibility with low pressure drop. The air passes through the joints without creating unnecessary turbulence, thus producing an energy-saving low pressure drop and a quieter working environment.



## *Recommended air flow*

The recommended air flow for a Ø2" arm is 30-45 cfm, See table and diagram.

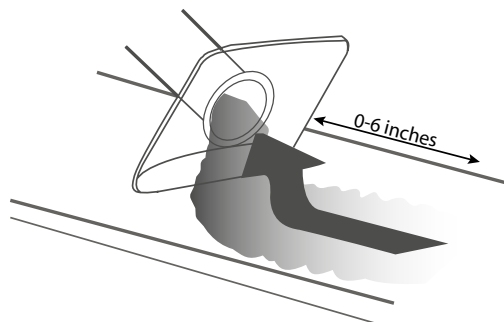
| Activity     | Air flow  |
|--------------|-----------|
| Laboratories | 30-45 cfm |
| Schools      | 30-45 cfm |
| Nail salons  | 40 cfm    |



Static pressure drop is measured in accordance with ISO standard 5167-1.

## *Optimal capture*

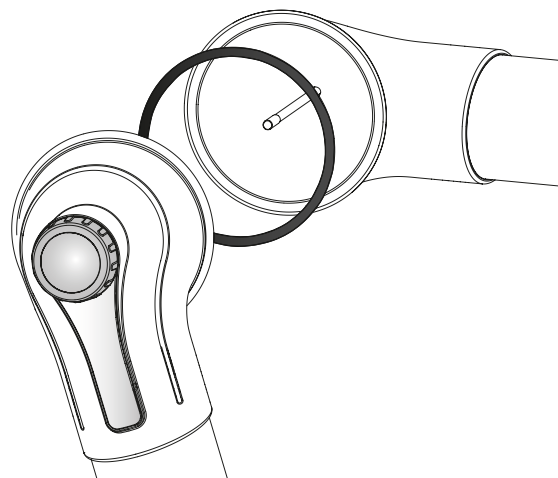
For optimum benefit from the local extractor, it is important to use the flexibility of the extractor to get as close to the contaminant as possible. A good rule of thumb would be a distance of 2–3 times the diameter of the extractor tube. At the recommended air flow, the extractor will provide high efficiency even if disturbances are generated in the surroundings.



## *Unique benefits*

The Movex ME joints have a patented friction design that, combined with the large joint diameter and single grip handle, provide a secure, position-stable arm with smooth adjustments. All without the need to apply excessive force or use tools on the adjusting knob.

Joints with reinforced ends and ball bearings moderate the friction and allow the arm to be moved up and down while maintaining stability and function.



## *One arm. All options.*

The Movex ME has a complete range of accessories to suit every situation, enabling you to create the optimal extractor for the evacuation of hazardous airborne gases and particulates.



### **Standard version**

Suitable for evacuating most types of airborne contaminants, e.g. in laboratories, schools, hospitals, the pharmaceutical industry, nail salons and light industrial applications.



### **ESD version**



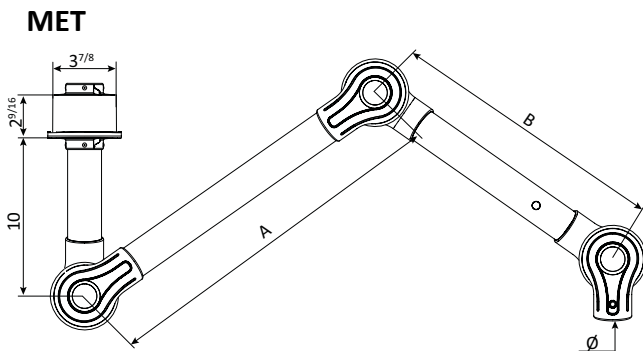
Suitable for evacuating airborne contaminants in environments where there is a need to avoid the risk of spark formation and in areas where products need to be ESD-certified, e.g. the electronics industry.



## MET for ceiling and wall mounting, 3 joints

| Standard    | Size (inches) |    |              |     | Weight (lb) |
|-------------|---------------|----|--------------|-----|-------------|
|             | A             | B  | Total length | Ø C |             |
| MET 1000-50 | 16            | 12 | 40           | 2   | 3.30        |
| MET 1300-50 | 22            | 18 | 51           | 2   | 3.60        |
| MET 1500-50 | 30            | 18 | 60           | 2   | 3.75        |

| ESD           | Size (inches) |    |              |     | Weight (lb) |
|---------------|---------------|----|--------------|-----|-------------|
|               | A             | B  | Total length | Ø C |             |
| MET 1000-50ES | 16            | 12 | 40           | 2   | 3.30        |
| MET 1300-50ES | 22            | 18 | 51           | 2   | 3.60        |
| MET 1500-50ES | 30            | 18 | 60           | 2   | 3.75        |

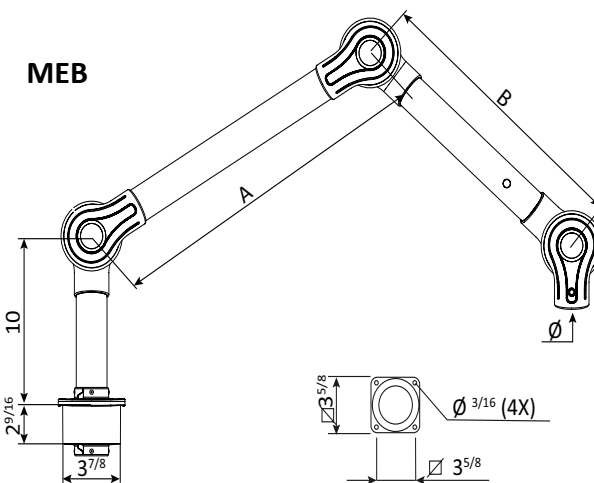


Add MTI bracket for ceiling mounting.  
Add MVK bracket for wall mounting.

## MEB for table mounting, 3 joints

| Standard    | Size (inches) |    |              |     | Weight (lb) |
|-------------|---------------|----|--------------|-----|-------------|
|             | A             | B  | Total length | Ø C |             |
| MEB 1000-50 | 16            | 12 | 40           | 2   | 3.30        |
| MEB 1300-50 | 22            | 18 | 51           | 2   | 3.60        |
| MEB 1500-50 | 30            | 18 | 60           | 2   | 3.75        |

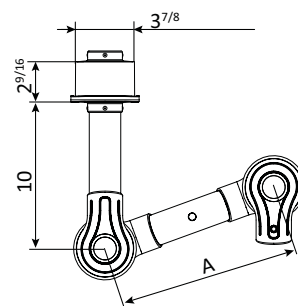
| ESD           | Size (inches) |    |              |     | Weight (lb) |
|---------------|---------------|----|--------------|-----|-------------|
|               | A             | B  | Total length | Ø C |             |
| MEB 1000-50ES | 16            | 12 | 40           | 2   | 3.30        |
| MEB 1300-50ES | 22            | 18 | 51           | 2   | 3.60        |
| MEB 1500-50ES | 30            | 18 | 60           | 2   | 3.75        |



## MET for ceiling and wall mounting, 2 joints

| Standard   | Size (inches) |     | Weight (lb) |
|------------|---------------|-----|-------------|
|            | A             | Ø C |             |
| MET 650-50 | 12            | 2   | 2.20        |
| MET 750-50 | 18            | 2   | 2.40        |

| ESD          | Size (inches) |     | Weight (lb) |
|--------------|---------------|-----|-------------|
|              | A             | Ø C |             |
| MET 650-50ES | 12            | 2   | 2.20        |
| MET 750-50ES | 18            | 2   | 2.40        |

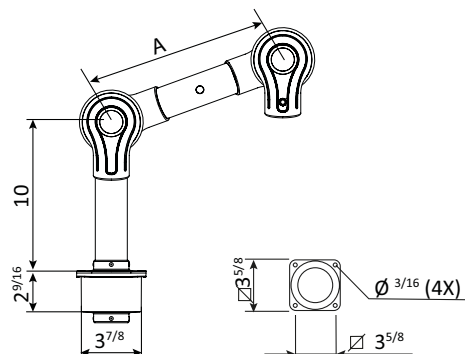


Add MTI bracket for ceiling mounting.  
Add MVK bracket for wall mounting.

## MEB for table mounting, 2 joints

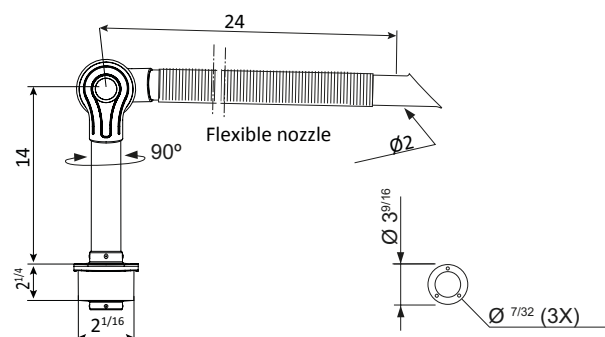
| Standard   | Size (inches) |     | Weight (lb) |
|------------|---------------|-----|-------------|
|            | A             | Ø C |             |
| MEB 650-50 | 12            | 2   | 2.20        |
| MEB 750-50 | 18            | 2   | 2.40        |

| ESD          | Size (inches) |     | Weight (lb) |
|--------------|---------------|-----|-------------|
|              | A             | Ø C |             |
| MEB 650-50ES | 12            | 2   | 2.20        |
| MEB 750-50ES | 18            | 2   | 2.40        |



## MEBC for table mounting, 1 joint.

| ESD           | Weight (lb) |
|---------------|-------------|
| MEBC 700-50ES | 1.75        |

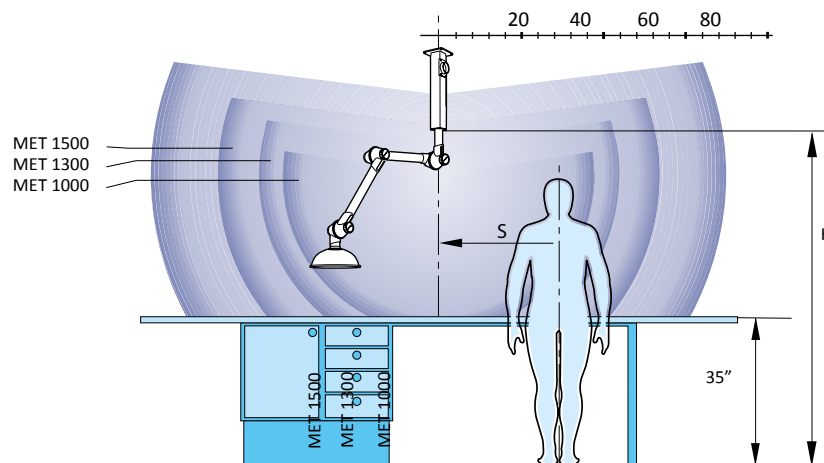


## Reach at recommended installation height

The following installation heights and side displacement relative to the work area are recommended for optimal extraction:

### Recommended installation height

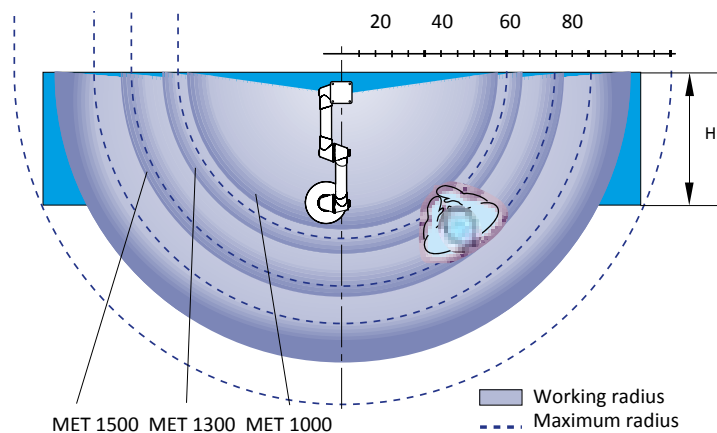
| Designation | H (inches) |
|-------------|------------|
| MET 1000-50 | 64-76      |
| MET 1300-50 | 72-84      |
| MET 1500-50 | 76-88      |



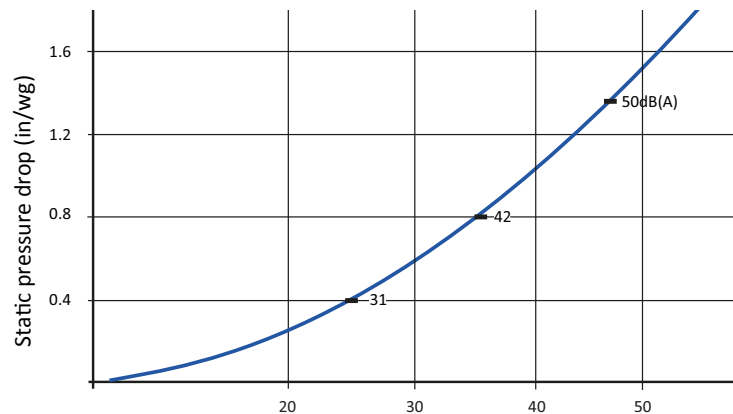
### Recommended side displacement

radius, relative to work area

| Designation | S (inches) |
|-------------|------------|
| MET 1000-50 | 12-24      |
| MET 1300-50 | 16-28      |
| MET 1500-50 | 20-32      |



## Pressure drop



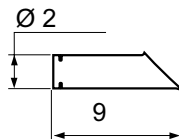
Static pressure drop is measured in accordance with ISO standard 5167-1.

Noise level is measured in accordance with ISO standard 3743.

Air flow cfm

Indicated sound level refers to sound pressure level.

## Hoods



### SUCTION NOZZLE

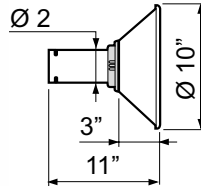
The suction nozzle is used in tight spaces and for getting close to the work without interfering.

Temp. range: -5°F to +176°F

| Standard   | Variants | Vikt (oz) |
|------------|----------|-----------|
| MES 300-50 | ES       | 4.0       |

Material  
Standard:  
ES

Aluminum  
PEEL black



### METAL HOOD

The metal hood is used when working in corrosive environments and for capturing hot gasses and dust splatter.

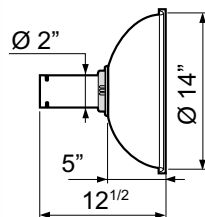
Metal hoods can be fitted with work lighting.

Temp. range: -5°F to +176°F

| Standard   | Variants | Vikt (oz) |
|------------|----------|-----------|
| MEM 250-50 | ES       | 10.6      |

Material  
Standard:  
ES

Powder-coated aluminum  
Aluminum



### DOME HOOD

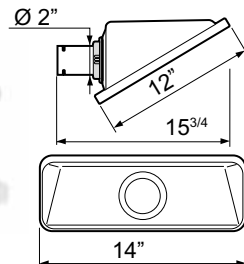
The clear dome hood is suitable for lighter gasses with a wider dispersal of contaminants without blocking the user's vision.

Temp. range: -5°F to +176°F

| Standard   | Variants | Vikt (oz) |
|------------|----------|-----------|
| MEK 350-50 | ES       | 14.4      |

Material  
Standard:  
ES

PMMA, clear  
PEEL black



### SQUARE HOOD

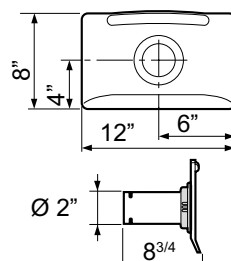
The square hood is suitable for placing above gasses with a high lift, or adjacent to the work surface for contaminants with no lift or low lift – all this without interfering with the work.

Temp. range: -5°F to +176°F

| Standard    | Variants | Vikt (oz) |
|-------------|----------|-----------|
| MESH 350-50 |          | 15.9      |

Material  
Standard:

PETG, clear



### FLAT SCREEN HOOD

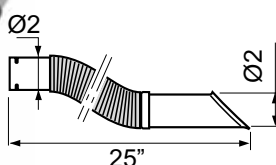
The flat screen hood is designed to maximise the working area without obscuring the object from the user. The flat screen hood gives the best suction effect for table and bench tasks.

Temp. range: -5°F to +176°F

| Standard    | Variants | Vikt (oz) |
|-------------|----------|-----------|
| MEPH 300-50 | ES       | 11.6      |

Material  
Standard:  
ES

PETG, clear  
PEEL black



### FLEXIBLE SUCTION NOZZLE

The flexible suction nozzle is designed to maximise ease of movement without sacrificing air flow efficiency. Available in the ESD version only.

Temp. range: -5°F to +176°F

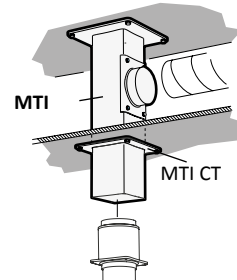
| Standard     | Variants | Vikt (oz) |
|--------------|----------|-----------|
| MFS 600-50ES | -        | 11.0      |

## Brackets



All Movex laboratory extractors have as standard a full swivel that allows 360° of rotation without the need to add special sleeve couplings.

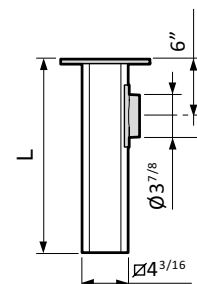
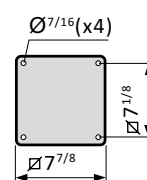
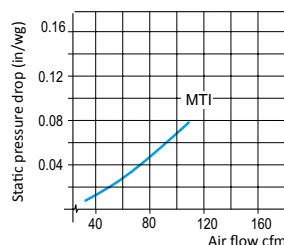
Both ceiling and wall brackets have a special square-shaped profile in anodized aluminum to provide a stylish and stable installation. This aluminum profile also allows both the wall and ceiling brackets to be custom tailored at the job site.



### The MTI and MTF ceiling bracket

The ceiling bracket functions as a simple and stable duct for outgoing air, avoiding the need for expensive ducting and additional holes through false ceilings. **On request, the MTI can be supplied in lengths exceeding 80 inches.**

| Standard | Dimensions<br>(inches) | Weight<br>(lb) |
|----------|------------------------|----------------|
|          | L                      |                |
| MTI 250  | 10                     | 6.9            |
| MTI 500  | 20                     | 8.4            |
| MTI 750  | 30                     | 9.9            |
| MTI 1000 | 40                     | 11.4           |
| MTI 1250 | 50                     | 12.9           |
| MTI 1500 | 60                     | 14.4           |
| MTI 1750 | 70                     | 15.9           |
| MTI 2000 | 80                     | 17.4           |



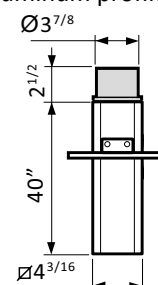
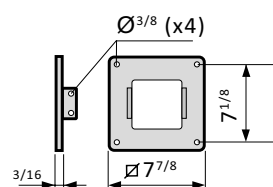
Ceiling bracket, for fitting through beams. The attachment plate is adjustable for the entire length of the aluminum profile. If required, the aluminum profile can be cut during fitting.

| Standard | Dimensions<br>(inches) | Weight<br>(lb) |
|----------|------------------------|----------------|
|          | L                      |                |
| MTF      | 40                     | 9.3            |

As well as the standard design, the MTI and MTF are available in ESD (ES) versions.

The ceiling brackets can be supplied with an epoxy-coated exterior in all lengths.

For aggressive environments, we recommend epoxy coating on the interior and exterior.

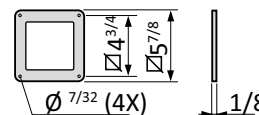


### The MTI CT escutcheon plate

Escutcheon plate, used with the MTI ceiling bracket for stabilization and to cover the rough cut in false ceilings.

| Standard | Weight<br>(oz) |
|----------|----------------|
| MTI CT   | 0.176          |

As well as the standard design, the escutcheon plate is available in an ESD (ES) version.

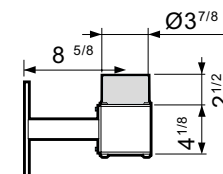
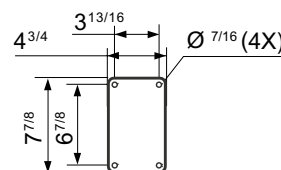


### MVK wall bracket

Wall brackets can be special ordered in custom horizontal and vertical lengths.

| Standard | Weight<br>(lb) |
|----------|----------------|
| MVK      | 4.7            |

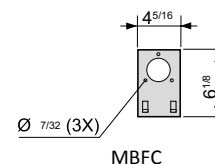
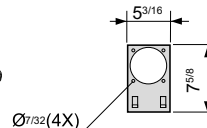
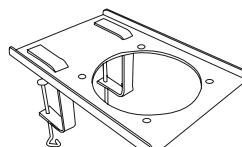
As well as the standard design, the wall bracket is available in an ESD (ES) version.



### MBF flexible table bracket

Flexible bracket for attaching to a table-top or shelving. Supplied complete with two clamps.

| Standard | Weight<br>(lb) |
|----------|----------------|
| MBF      | 1.6            |
| MBFC ES  | 1.5            |

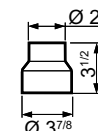


As well as the standard design, the table bracket is available in an ESD (ES) version.

### MRM reducing sleeve

Polypropylene, fits standard Ø 3 7/8" attachment, for reducing down to Ø 2

| Standard   | Weight<br>(oz) |
|------------|----------------|
| MRM 100-50 | 3.0            |







## Material description

### Friction joints

Ball bearing-equipped adjustable friction joints in polypropylene (PP), with guide ring in low friction-treated rubber. Support springs and other component parts in zinc-plated steel or stainless steel.

### Tubes

Made from thin-walled anodized aluminum. Air-tight damper supplied as standard.

### ME Standard

The standard ME version has polypropylene joints and anodized aluminum tubes.

The standard ME version is suitable for evacuating most types of airborne contaminants, e.g. in laboratories, schools, hospitals, the pharmaceutical industry, nail salons and light industrial applications.

### ME ESD



Joints are made from conductive propylene, making the entire arm electrically conductive and diverting any static electricity to a separate earth connection.

The ESD version of the ME is suitable for the evacuation of airborne contaminants in environments where there is a need to avoid the risk of spark formation caused by static electricity and in areas where products need to be ESD-certified for use, e.g. the electronics industry. The ME ESD has been approved in accordance with EN 61340-5-1.

## Delivery

**Ceiling/** Supplied assembled, excluding hood. The  
**Wall** ceiling or wall brackets should be ordered separately.  
**MET**

**Table-** Supplied assembled, with attachment plate for table  
**MEB** fitting, excluding hood.  
The MBF flexible table bracket should be ordered separately.

# MOVEX®

104 Commerce Drive, Northampton, PA 18067, USA

Phone: 610 440-0478, Fax: 610 440-0480

[www.movexinc.com](http://www.movexinc.com) [info@movexinc.com](mailto:info@movexinc.com)