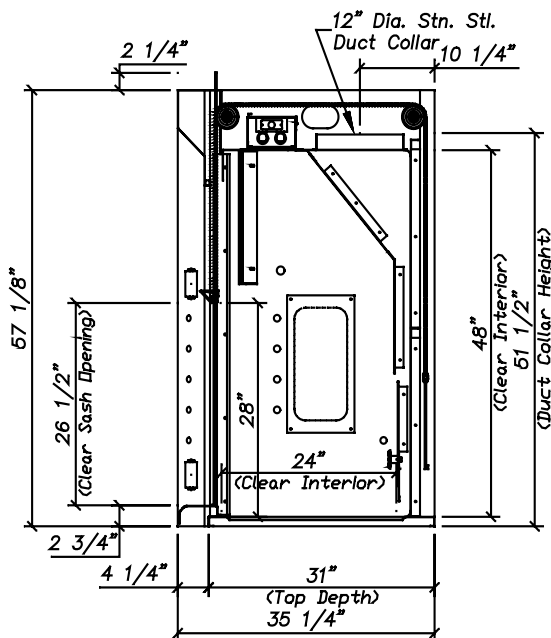


F-400 Isotope Bench Hood – Frameless Vertical Sash

The **ISOLATOR** Isotope fume hood with a frameless vertical sash, designed for use with radioisotope or biological work, features a type 304 or 316 stainless steel liner and baffles with coving on all containment chamber corners to facilitate cleaning. The integral work surface is reinforced to carry up to 200 lbs./sq. ft. of lead shielding or other overburden. The **ISOLATOR**'s design and construction enhances its value by providing:

- Unparalleled user safety
- Full hood access for easy set ups
- Years of maintenance free service
- Unmatched ease of use
- Unique design qualities for unlimited customization possibilities
- Field conversion between Constant Air Volume (CAV) and Variable Air Volume (VAV)



F-400 Isotope Bench Hood Features

- Unsurpassed containment (designed and tested to exceed ASHRAE 110-1995)
- Unique chain driven sash mechanism that comes with a lifetime warranty
- Galvanized steel pan superstructure
- Transparent viewpass bypass system
- Stainless steel air foil
- Aerodynamically designed airplane wing style sash handle enhances the perimeter containment
- Integral type stainless steel worktop and cupsink
- Vertical sashes provide the greatest hood interior access
- Full view frameless sash with 26 1/2" opening
- Quality engineering ensures years of reliable service

F-400 Series – Radioisotope Bench Hoods – Ordering Information

F-400 Isotope Bench Hood Air Flow Data

Catalog Number	Duct Diameter	28" Open @ 100 FPM	18" Open @ 100 FPM
F-400-36	1 : 10"	505 CFM @ .15" SP	325 CFM @ .06" SP
F-400-48	1 : 10"	739 CFM @ .32" SP	475 CFM @ .13" SP
F-400-60	1 : 12"	972 CFM @ .27" SP	625 CFM @ .11" SP
F-400-72	1 : 12"	1205 CFM @ .41" SP	775 CFM @ .17" SP
F-400-96	2 : 10"	1672 CFM @ .41" SP	1075 CFM @ .17" SP

F-400 Isotope Bench Hood Product Numbers

F-400-36	Isotope 36"	Frameless Sash	(304 Coved)
F-400-48	Isotope 48"	Frameless Sash	(304 Coved)
F-400-60	Isotope 60"	Frameless Sash	(304 Coved)
F-400-72	Isotope 72"	Frameless Sash	(304 Coved)
F-400-96	Isotope 96"	Frameless Sash	(304 Coved)

F-400 Isotope Bench Hood Liner Options

Type 304 stainless steel liner and integral workshop is standard. Please see the **Hood Liners** section for available options.

F-400 Isotope Bench Hood Electrical Options

Fascia is pre-punched with two electrical cutouts (four cutouts total). Please see the **Electrical Fixtures** section for available options.

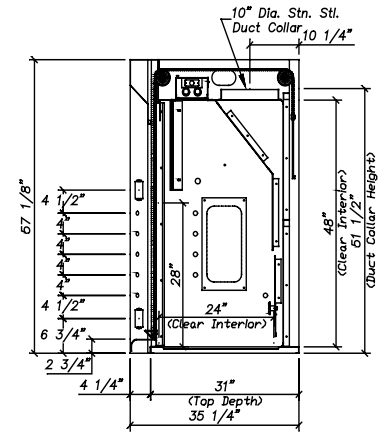
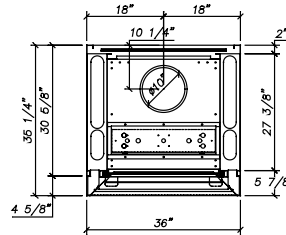
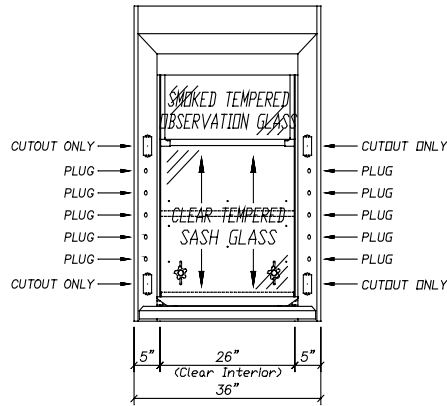
F-400 Isotope Bench Hood Plumbing Fixtures

Fascia is pre-punched with five 3/4" dia. holes to accept rod driven remote fixtures (ten holes total). Please see the **Plumbing Fixtures** section for available options.

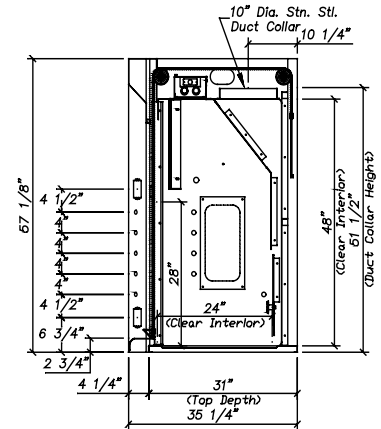
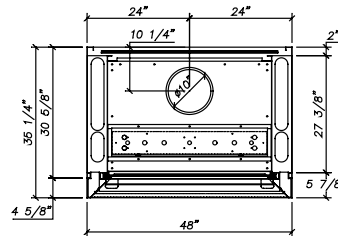
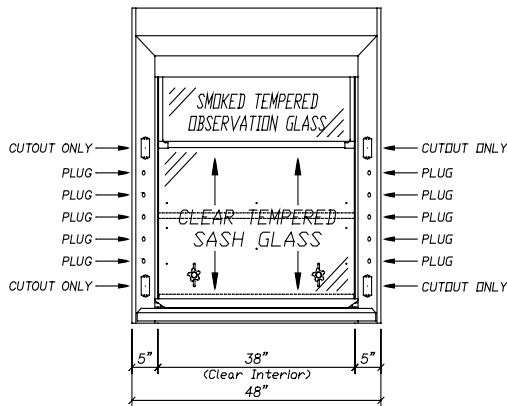
F-400 Isotope Bench Hood Fume Hood Accessories

Please see the **Fume Hood Accessories** section for available options.

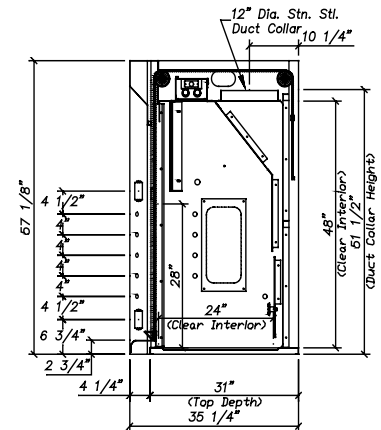
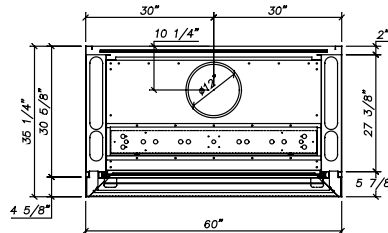
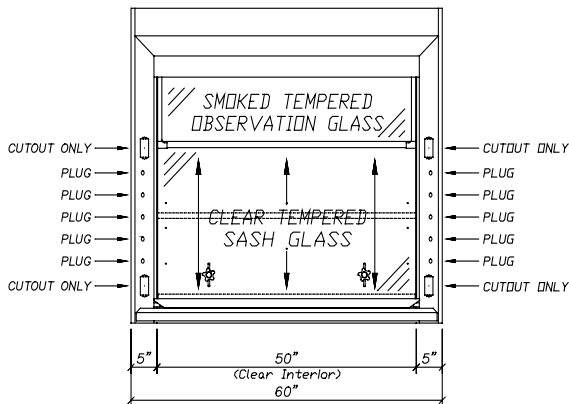
F-400-36 – 36" Isotope Bench Hood



F-400-48 – 48" Isotope Bench Hood

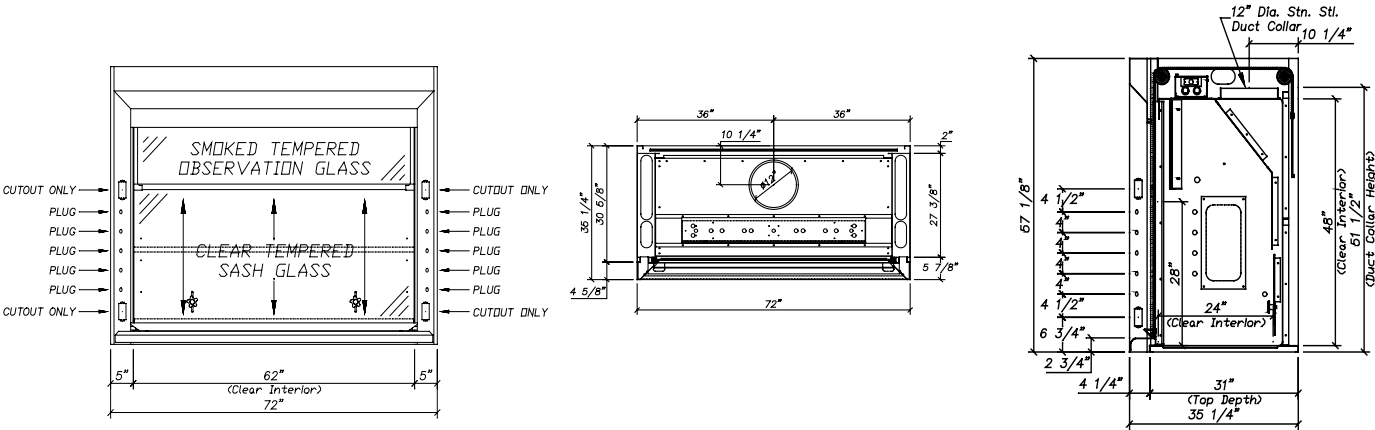


F-400-60 – 60" Isotope Bench Hood

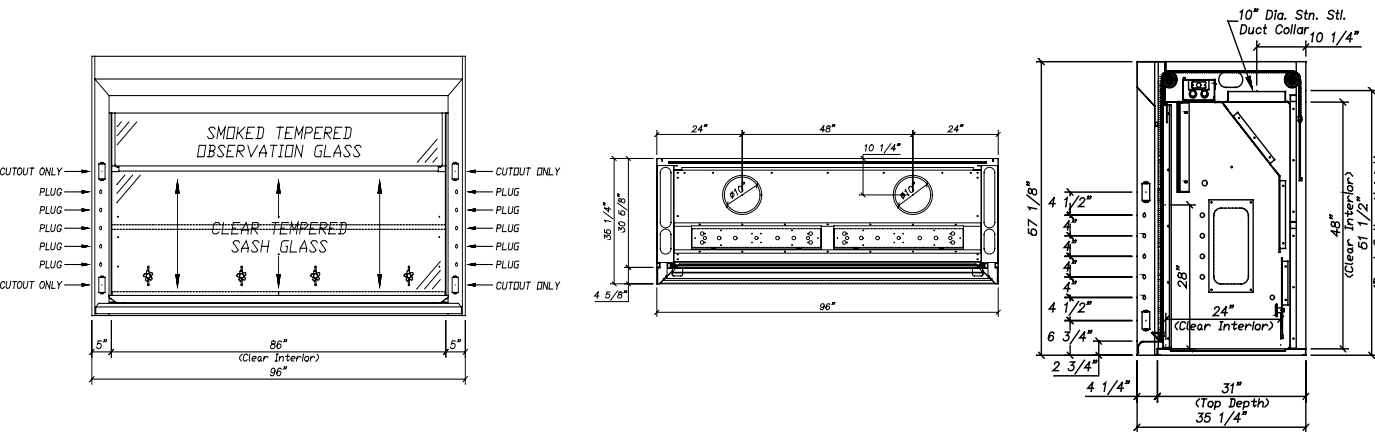


F-400 Series – Radioisotope Bench Hoods – Product Dimensions

F-400-72 – 72" Isotope Bench Hood



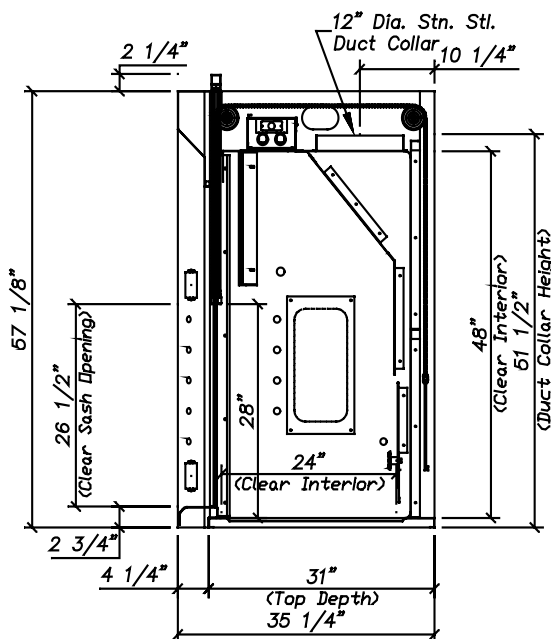
F-400-96 – 96" Isotope Bench Hood



F-401 Isotope Bench Hood – Combination Sash

The **ISOLATOR** Isotope fume hood with a combination sash, designed for use with radioisotope or biological work, features a type 304 or 316 stainless steel liner and baffles with coving on all containment chamber corners to facilitate cleaning. The integral work surface is reinforced to carry up to 200 lbs./sq. ft. of lead shielding or other overburden. The **ISOLATOR**'s design and construction enhances its value by providing:

- Unparalleled user safety
- Years of maintenance free service
- Unmatched ease of use
- Unique design qualities for unlimited customization possibilities
- Field conversion between Constant Air Volume (CAV) and Variable Air Volume (VAV)



F-401 Isotope Bench Hood Features

- Unsurpassed containment (designed and tested to exceed ASHRAE 110-1995)
- Unique chain driven sash mechanism that comes with a lifetime warranty
- Galvanized steel pan superstructure
- Transparent viewpass bypass system
- Stainless steel air foil
- Offers the best features of both the vertical and horizontal sashes thus allowing flexible interior access while minimizing the sash opening for energy savings
- Integral type stainless steel worktop and cupsink
- Vertical sashes provide the greatest hood interior access
- Full view stainless steel combination sash with 26 1/2" opening
- Quality engineering ensures years of reliable service

F-400 Series – Radioisotope Bench Hoods – Ordering Information

F-401 Isotope Bench Hood Air Flow Data

Catalog Number	Duct Diameter	28" Open @ 100 FPM	*14" Open @ 100 FPM
F-401-48	1 : 10"	739 CFM @ .32" SP	410 CFM @ .10" SP
F-401-60	1 : 12"	972 CFM @ .27" SP	559 CFM @ .09" SP
F-401-72	1 : 12"	1205 CFM @ .41" SP	704 CFM @ .14" SP
F-401-96	2 : 10"	1672 CFM @ .41" SP	986 CFM @ .14" SP

*50% Open may be achieved two ways:

1. Vertical sash open 14"; horizontal panels closed 2. Vertical sash closed; horizontal panels full open

F-401 Isotope Bench Hood Product Numbers

F-401-48	Isotope 48"	Combination	(304 Coved)
F-401-60	Isotope 60"	Combination	(304 Coved)
F-401-72	Isotope 72"	Combination	(304 Coved)
F-401-96	Isotope 96"	Combination	(304 Coved)

F-401 Isotope Bench Hood Liner Options

Type 304 stainless steel liner and integral workshop is standard. Please see the **Hood Liners** section for available options.

F-401 Isotope Bench Hood Electrical Options

Fascia is pre-punched with two electrical cutouts (four cutouts total). Please see the **Electrical Fixtures** section for available options.

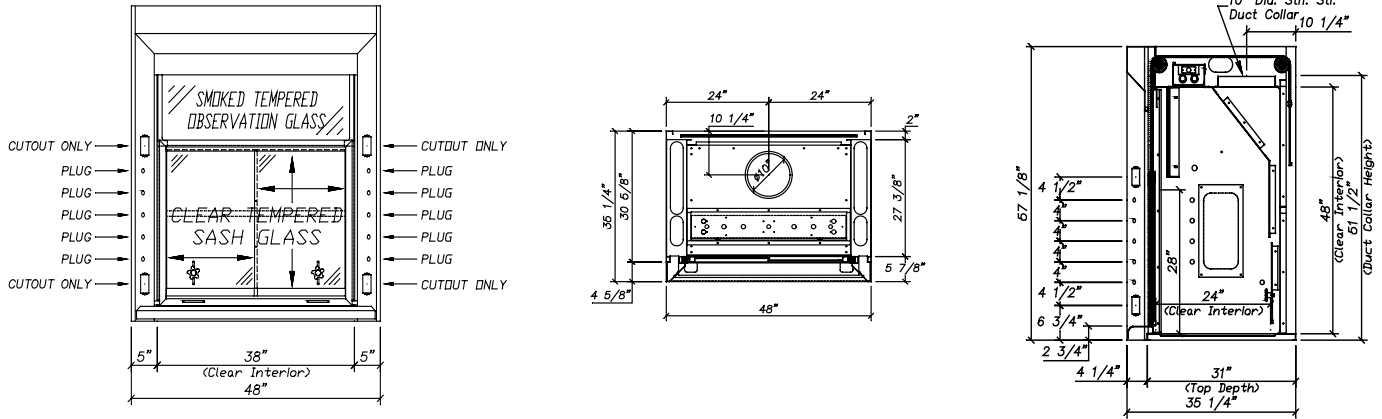
F-401 Isotope Bench Hood Plumbing Fixtures

Fascia is pre-punched with five 3/4" dia. holes to accept rod driven remote fixtures (ten holes total). Please see the **Plumbing Fixtures** section for available options.

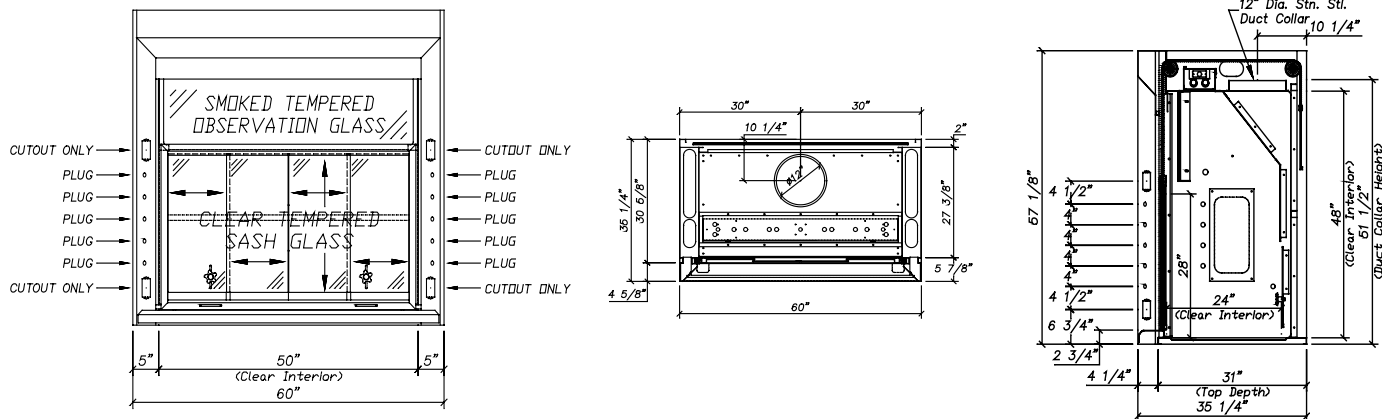
F-401 Isotope Bench Hood Fume Hood Accessories

Please see the **Fume Hood Accessories** section for available options.

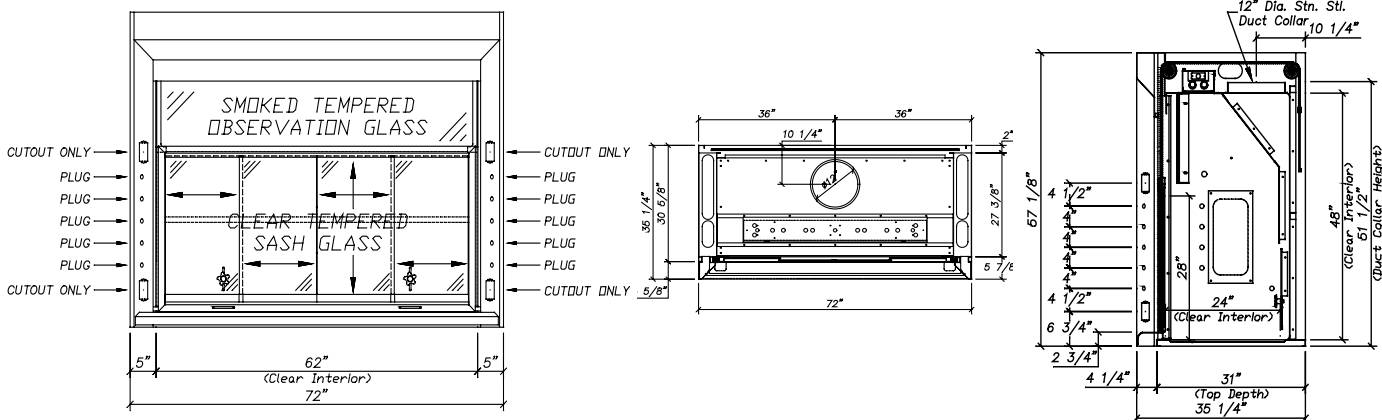
F-401-48 – 48" Isotope Bench Hood



F-401-60 – 60" Isotope Bench Hood

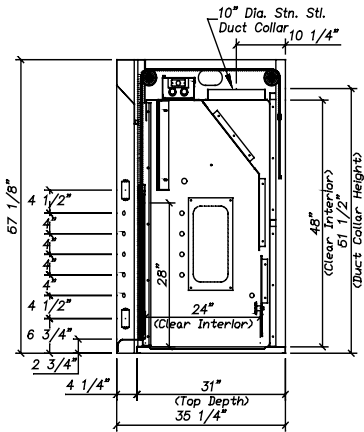
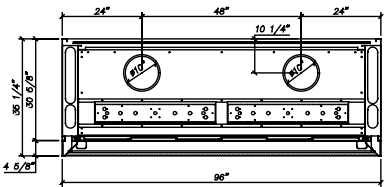
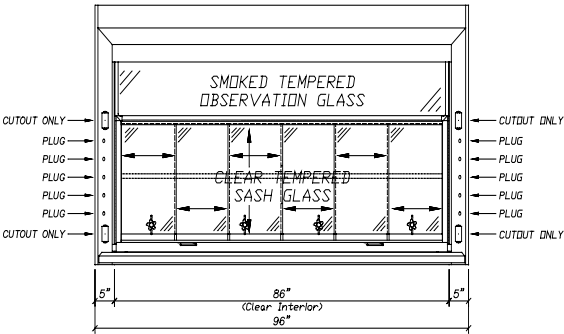


F-401-72 – 72" Isotope Bench Hood



F-400 Series – Radioisotope Bench Hoods – Product Dimensions

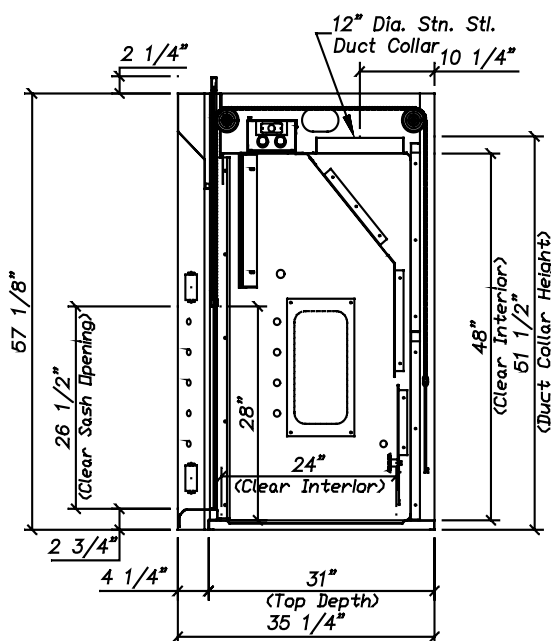
F-401-96 – 96" Isotope Bench Hood



F-403 Isotope Bench Hood – Framed Vertical Sash

The **ISOLATOR** Isotope fume hood with a framed vertical sash, designed for use with radioisotope or biological work, features a type 304 or 316 stainless steel liner and baffles with coving on all containment chamber corners to facilitate cleaning. The integral work surface is reinforced to carry up to 200 lbs./sq. ft. of lead shielding or other overburden. The **ISOLATOR's** design and construction enhances its value by providing:

- Unparalleled user safety
- Full hood access for easy set ups
- Years of maintenance free service
- Unmatched ease of use
- Unique design qualities for unlimited customization possibilities
- Field conversion between Constant Air Volume (CAV) and Variable Air Volume (VAV)



F-403 Isotope Bench Hood Features

- Unsurpassed containment (designed and tested to exceed ASHRAE 110-1995)
- Unique chain driven sash mechanism that comes with a lifetime warranty
- Galvanized steel pan superstructure
- Transparent viewpass bypass system
- Stainless steel air foil
- Integral type 304 stainless steel worktop and cupsink
- Vertical sashes provide the greatest hood interior access
- Full view frameless sash with 26 1/2" opening
- Quality engineering ensures years of reliable service

F-400 Series – Radioisotope Bench Hoods – Ordering Information

F-403 Isotope Bench Hood Air Flow Data

Catalog Number	Duct Diameter	28" Open @ 100 FPM	18" Open @ 100 FPM
F-403-36	1 : 10"	505 CFM @ .15" SP	325 CFM @ .06" SP
F-403-48	1 : 10"	739 CFM @ .32" SP	475 CFM @ .13" SP
F-403-60	1 : 12"	972 CFM @ .27" SP	625 CFM @ .11" SP
F-403-72	1 : 12"	1205 CFM @ .41" SP	775 CFM @ .17" SP
F-403-96	2 : 10"	1672 CFM @ .41" SP	1075 CFM @ .17" SP

F-403 Isotope Bench Hood Product Numbers

F-403-36	Isotope 36"	Framed Sash	(304 Coved)
F-403-48	Isotope 48"	Framed Sash	(304 Coved)
F-403-60	Isotope 60"	Framed Sash	(304 Coved)
F-403-72	Isotope 72"	Framed Sash	(304 Coved)
F-403-96	Isotope 96"	Framed Sash	(304 Coved)

F-403 Isotope Bench Hood Liner Options

Type 304 stainless steel liner and integral workshop is standard. Please see the **Hood Liners** section for available options.

F-403 Isotope Bench Hood Electrical Options

Fascia is pre-punched with two electrical cutouts (four cutouts total). Please see the **Electrical Fixtures** section for available options.

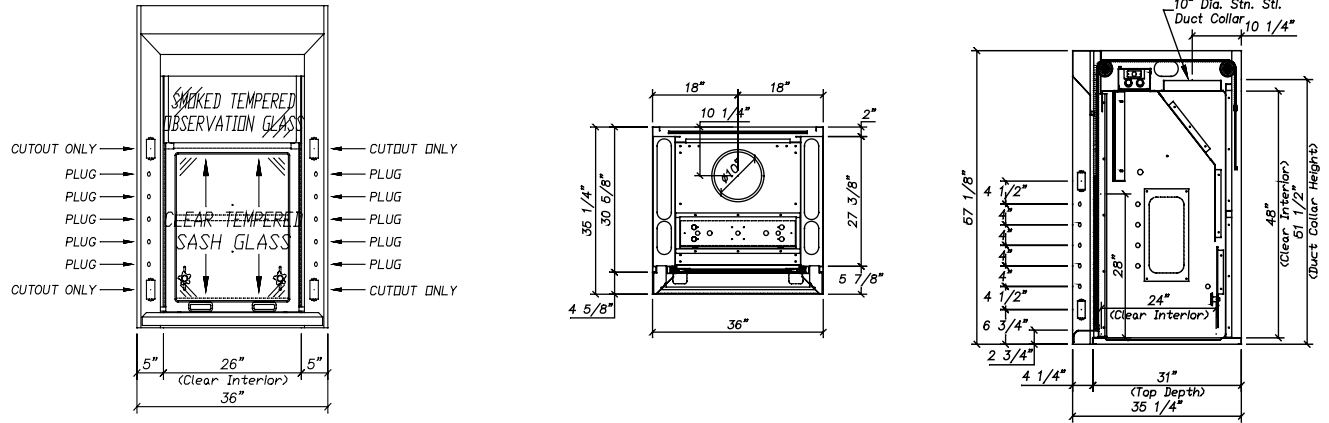
F-403 Isotope Bench Hood Plumbing Fixtures

Fascia is pre-punched with five 3/4" dia. holes to accept rod driven remote fixtures (ten holes total). Please see the **Plumbing Fixtures** section for available options.

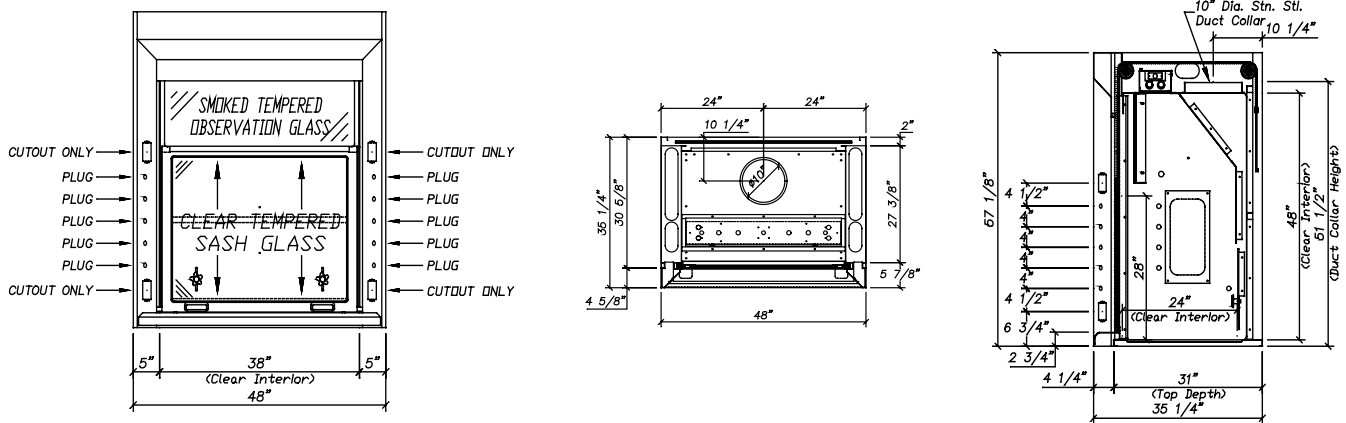
F-403 Isotope Bench Hood Fume Hood Accessories

Please see the **Fume Hood Accessories** section for available options.

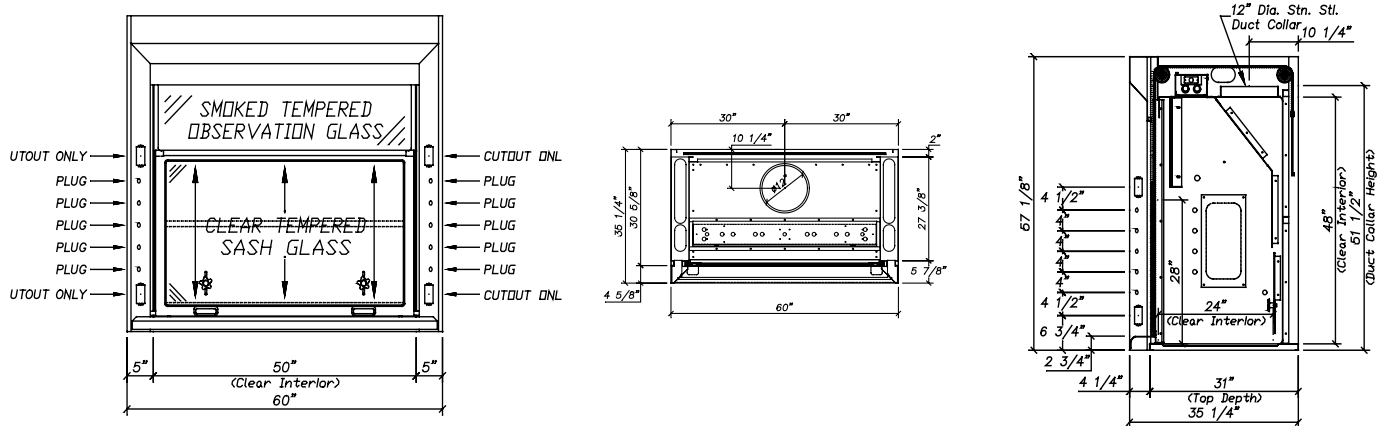
F-403-36 – 36" Isotope Bench Hood



F-403-48 – 48" Isotope Bench Hood

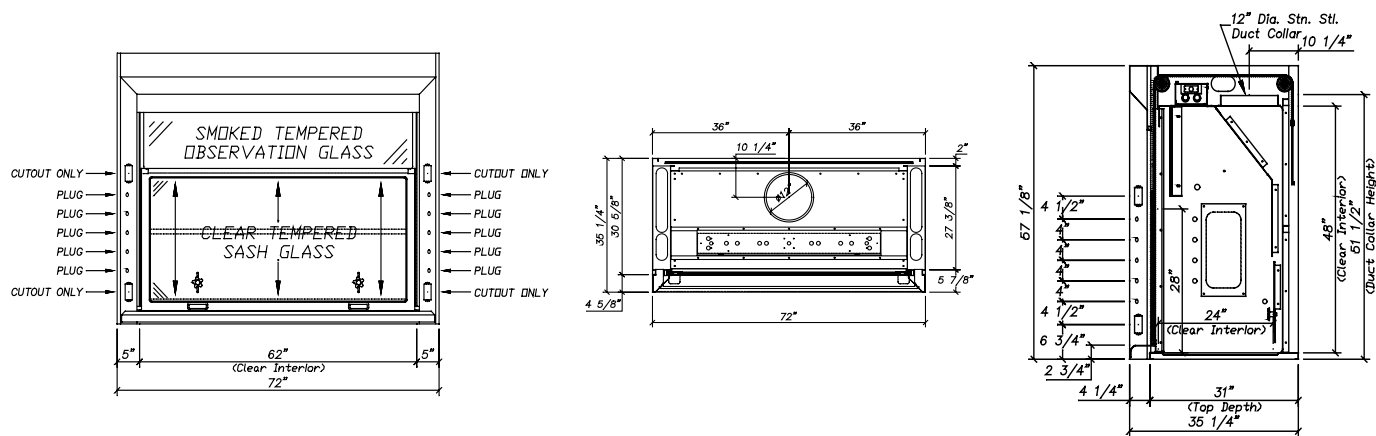


F-403-60 – 60" Isotope Bench Hood



F-400 Series – Radioisotope Bench Hoods – Product Dimensions

F-403-72 – 72" Isotope Bench Hood



F-403-96 – 96" Isotope Bench Hood

