

Drug Security Cabinets

Narcotic Lockers

Units are prewired for field connection.
 Locks are not master keyed. Key has only one duplicate.
 Key is removable in locked position only.
 Warning lights activated by switch on outer door.
 14 1/2" W x 10 1/2" H x 9" D



HP601-01
With Lock



HP600-01
With Lock

HP601-02
With Lock and Switch

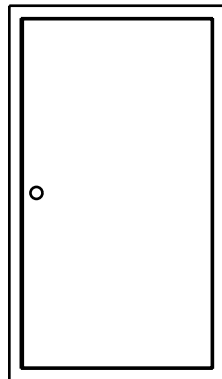
HP600-02
With Lock and Switch

HP601-03
With Lock, Switch
and Loose Light

HP600-03
With Lock, Switch
and Loose Light

Narcotic Cabinet

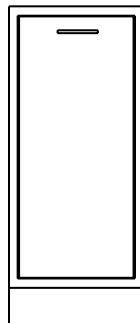
Double doors with differently
keyed locks
 Warning lights mounted
in cabinet
 Two adjustable shelves
 Key removable in locked
position only; prevents
closure of outer door, if key
left in lock
 18" W x 30" H x 12" D



HP602-01

Waste Bin Cabinet

Removable 6" x 6"
opening in counter top



HP633-12
HP633-15
HP633-18
HP633-21
HP633-24

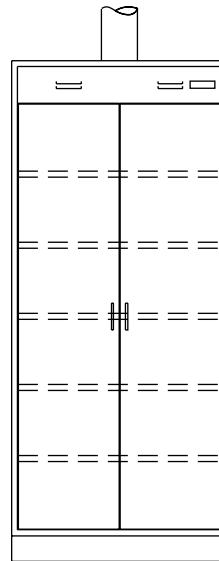
Last two digits of catalog number indicate width. Example: P125-18.
 Use the letter **S** in place of **P** (Painted) for Stainless Steel. Example: **S**125-18.
 Cabinets come standard with wire pull. To specify Recessed Pull, add **R** to end
 of cabinet number. Example: P125-18**R**.

For Locking Cabinet, add **L** to cabinet number. Example: P125-18**L**.

Please note: You must specify lock keying preferences when ordering locks;
 master keying and grand master keying may incur additional costs. Example:
 S125-18**RL** will order a stainless steel cabinet with recessed pulls and locks.

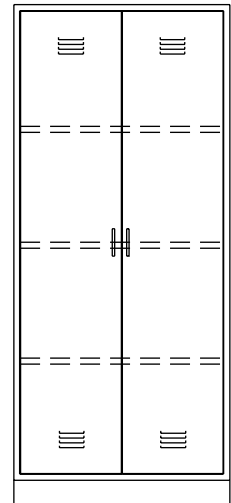
Drying Base & Storage Cabinets

Base Units are 35 1/4" High x 22" Deep
 Storage Units are 83 1/2" High x 22" Deep



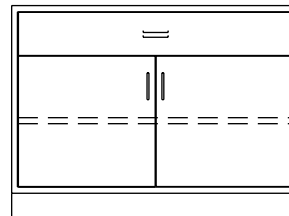
EP612-30
EP612-36
EP612-42
EP612-48

Tall Drying Unit
 Low Temp 140°F
 Five Adjustable Shelves
 Vented
 120 Volts/1500 Watts



HP311-30
HP311-36
HP311-42
HP311-48

Tall Acid Storage Unit
 Glasticboard Lined
 Vented
 Three Steel Shelves



EP611-30
EP611-36
EP611-42
EP611-48

Base Height Drying Unit
 Low Temp 140°F
 One Adjustable Shelf
 Vented
 120Volts/700 Watt

Healthcare & Specialty Cabinets

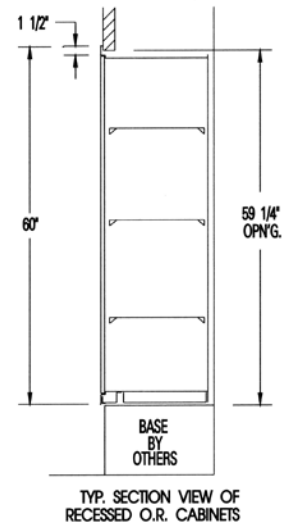
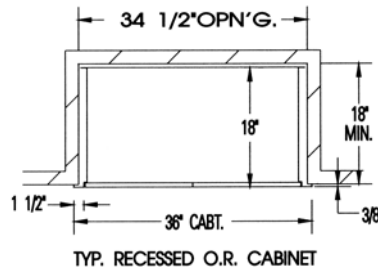
Last two digits of catalog number indicate width. Example: P125-18.

Use the letter **S** in place of **P** (Painted) for Stainless Steel. Example: **S**125-18.

Cabinets come standard with wire pull. To specify Recessed Pull, add **R** to end of cabinet number. Example: P125-18**R**.

For Locking Cabinet, add **L** to cabinet number. Example: P125-18**L**.

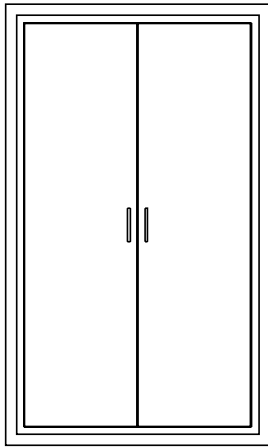
Please note: You must specify lock keying preferences when ordering locks; master keying and grand master keying may incur additional costs. Example: S125-18**RL** will order a stainless steel cabinet with recessed pulls and locks.



Operating Room Console Cabinets & Accessories

Flush interior-recess construction.

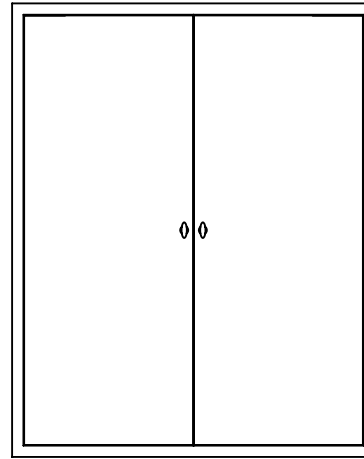
All units are 60" High x 18" Deep.



HP650-30
HP650-36
HP650-42
HP650-48

Table Accessory Cabinet
Pegboard Back, Painted
Swing Doors
Option: Shelves

24" Deep Cabinet
HP650-3024
HP650-3624
HP650-4224
HP650-4824



H_672-30
H_682-36
H_682-42
H_682-48

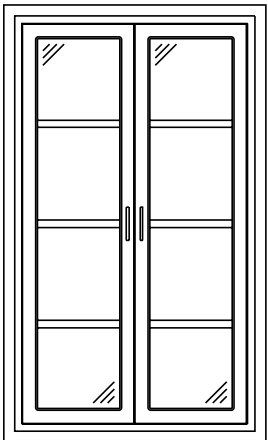
Accessory Cabinet
Pass Thru
Peg Board Side
Double Swing Doors

24" Deep Cabinet
H_682-3024
H_682-3624
H_682-4224
H_682-4824

HP655

Finished End
Storage Cabinet
for Operating Room

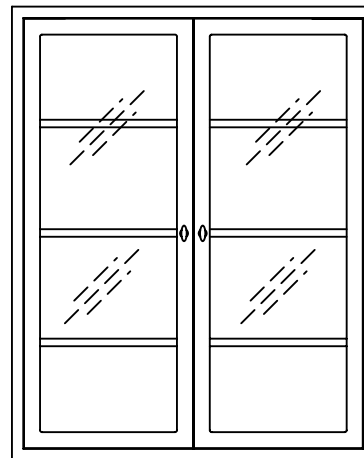
24" Deep Cabinet
HP655-24



HP651-30
HP651-36
HP651-42
HP651-48

Supply Cabinet
Three Adjustable Shelves
Glazed Glass Doors
1/4" Float Glass

24" Deep Cabinet
HP651-3024
HP651-3624
HP651-4224
HP651-4824



H_664-30
H_664-36
H_664-42
H_664-48

Supply Cabinet
3 Adjustable Shelves
Glazed Glass Doors

24" Deep Cabinet
H_664-3024
H_664-3624
H_664-4224
H_664-4824

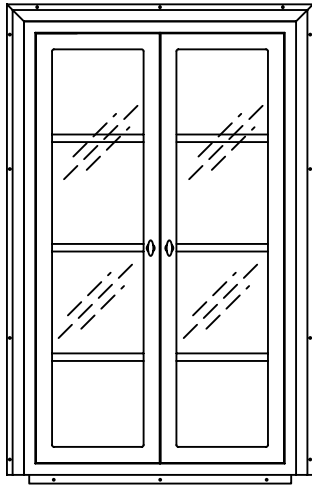
Last two digits of catalog number indicate width. Example: HS660-30.
Use the letter **S** (Stainless Steel) or **P** (Painted) after the H_ to indicate preference.
Example: HS660-30.

Cabinets come standard with wire pull. To specify Recessed Pull, add **R** to end of cabinet number. Example: HS660-30**R**.

For Locking Cabinet, add **L** to cabinet number. Example: HS660-30**L**.

Please note: You must specify lock keying preferences when ordering locks; master keying and grand master keying may incur additional costs. Example: HS660-30**RL** will order a stainless steel cabinet with recessed pulls and locks.

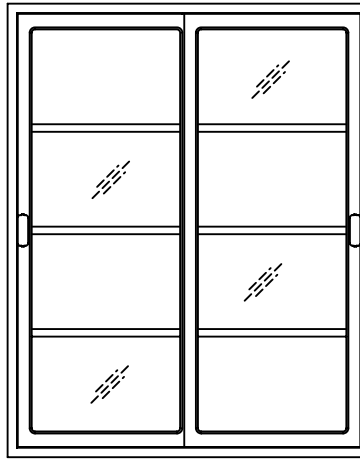
Operating Room Supplies and Equipment Cabinets



H_665-30
H_665-36
H_665-42
H_665-48

Supply Cabinet
Pass Thru
3 Adjustable Shelves
Glazed Glass Doors

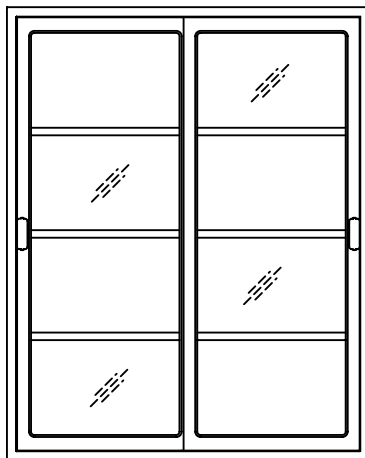
24" Deep Cabinet
H_665-3024
H_665-3624
H_665-4224
H_665-4824



H_685-30
H_685-36
H_685-42
H_685-48

Recessed Storage Cabinet
Pass Thru
3 Adjustable Shelves
Sliding Glass Doors

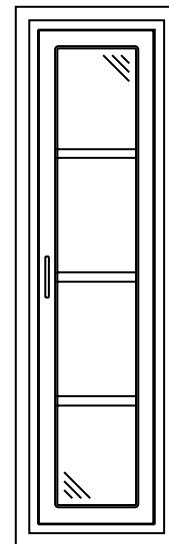
24" Deep Cabinet
H_685-3024
H_685-3624
H_685-4224
H_685-4824



H_686-30
H_686-36
H_686-42
H_686-48

Recessed Storage Cabinet
3 Adjustable Shelves
Sliding Glass Doors

24" Deep Cabinet
H_686-3024
H_686-3624
H_686-4224
H_686-4824



HP652-18
HP652-21
HP652-24

Supply Cabinet
Three Adjustable Shelves
Single Glazed Glass Door
1/4" Float Glass

24" Deep Cabinet
HP652-1824
HP652-2124
HP652-2424

Healthcare & Specialty Cabinets

Last two digits of catalog number indicate width. Example: HS660-30.

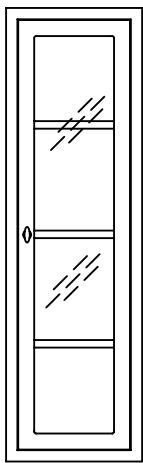
Use the letter **S** (Stainless Steel) or **P** (Painted) after the H_ to indicate preference. Example: HS660-30.

Cabinets come standard with wire pull. To specify Recessed Pull, add **R** to end of cabinet number. Example: HS660-30**R**.

For Locking Cabinet, add **L** to cabinet number. Example: HS660-30**L**.

Please note: You must specify lock keying preferences when ordering locks; master keying and grand master keying may incur additional costs. Example: HS660-30**RL** will order a stainless steel cabinet with recessed pulls and locks.

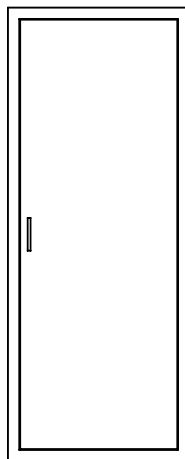
Operating Room Supplies and Equipment Cabinets



H_663-18
H_663-21
H_663-24

Supply Cabinet
Pass Thru
3 Adjustable Shelves
Glazed Glass Doors

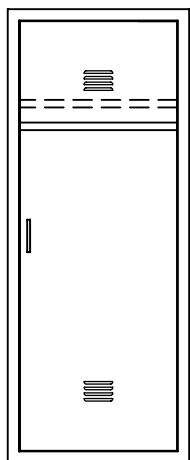
24" Deep Cabinet
H_663-1824
H_663-2124
H_663-2424



H_681-18
H_681-21
H_681-24

Table Accessory Cabinet
Peg Board Back
Swing Door

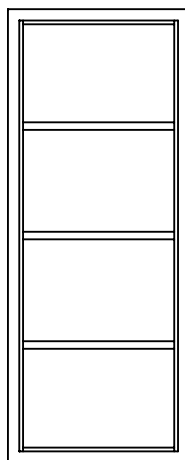
24" Deep Cabinet
H_681-1824
H_681-2124
H_681-2424



H_673-18
H_673-21
H_673-24

Single Wardrobe Unit
Hat Shelf
Coat Rod
Vented

24" Deep Cabinet
H_673-1824
H_673-2124
H_673-2424



H_684-18
H_684-24
H_684-30
H_684-36
H_684-42
H_684-48

Medication and
Supply Cabinet

24" Deep Cabinet
H_684-1824
H_684-2124
H_684-2424
H_684-3024
H_684-3624
H_684-4224
H_684-4824

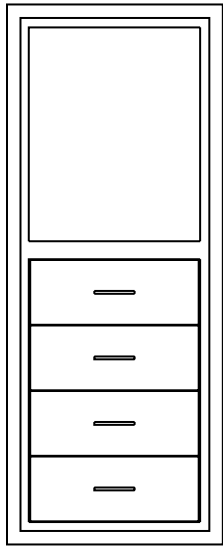
Last two digits of catalog number indicate width. Example: HS660-30.
Use the letter **S** (Stainless Steel) or **P** (Painted) after the H_ to indicate preference.
Example: HS660-30.

Cabinets come standard with wire pull. To specify Recessed Pull, add **R** to end of cabinet number. Example: HS660-30**R**.

For Locking Cabinet, add **L** to cabinet number. Example: HS660-30**L**.

Please note: You must specify lock keying preferences when ordering locks; master keying and grand master keying may incur additional costs. Example: HS660-30**RL** will order a stainless steel cabinet with recessed pulls and locks.

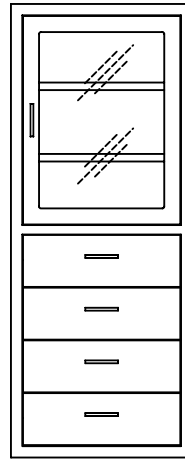
Operating Room Supplies and Equipment Cabinets



HP653-24

Writing Desk Unit
Four 7 7/32" Drawers
Corkboard at Back
Lighted Interior
Pencil Tray

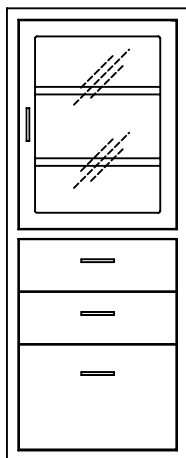
24" Deep Cabinet
HP653-2424



H_661-18
H_661-21
H_661-24

Writing Desk Unit
Pull-out Shelf
2 Adjustable Shelves
Glazed Glass Doors

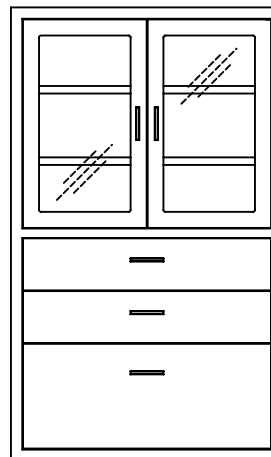
24" Deep Cabinet
H_661-1824
H_661-2124
H_661-2424



H_662-18
H_662-21
H_662-24

Writing Desk Unit
Pull-out Shelf
2 Adjustable Shelves
Glazed Glass Doors

24" Deep Cabinet
H_662-1824
H_662-2124
H_662-2424



H_660-30
H_660-36
H_660-42
H_660-48

Writing Desk Unit
Pull-out Shelf
2 Adjustable Shelves
Glazed Glass Doors

24" Deep Cabinet
H_660-3024
H_660-3624
H_660-4224
H_660-4824

Healthcare & Specialty Cabinets

Last two digits of catalog number indicate width. Example: HS660-30.

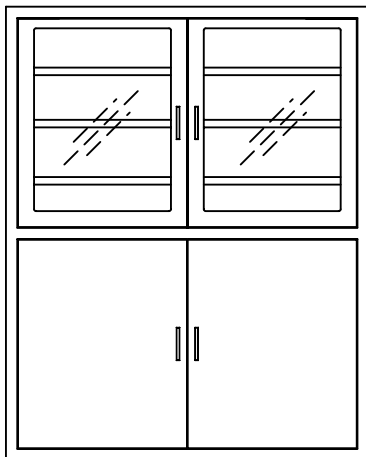
Use the letter **S** (Stainless Steel) or **P** (Painted) after the H_ to indicate preference. Example: HS660-30.

Cabinets come standard with wire pull. To specify Recessed Pull, add **R** to end of cabinet number. Example: HS660-30**R**.

For Locking Cabinet, add **L** to cabinet number. Example: HS660-30**L**.

Please note: You must specify lock keying preferences when ordering locks; master keying and grand master keying may incur additional costs. Example: HS660-30**RL** will order a stainless steel cabinet with recessed pulls and locks.

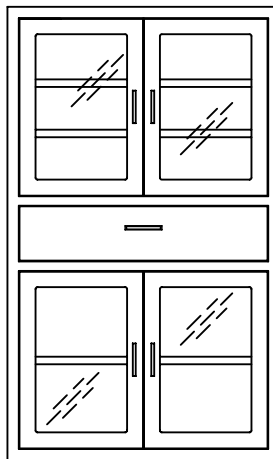
Operating Room Supplies and Equipment Cabinets



H_668-30
H_668-36
H_668-42
H_668-48

Storage Cabinet
3 Adjustable Shelves
Top Glazed Glass Doors
Bottom Swing Doors

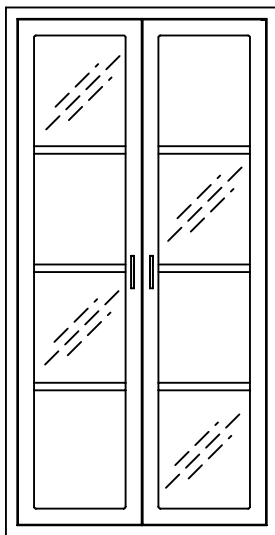
24" Deep Cabinet
H_668-3024
H_668-3624
H_668-4224
H_668-4824



H_669-30
H_669-36
H_669-42
H_669-48

Supply Cabinet
2 Adjustable Top Shelves
1 Adjustable Bottom Shelf
Glazed Glass Doors on
Top and Bottom

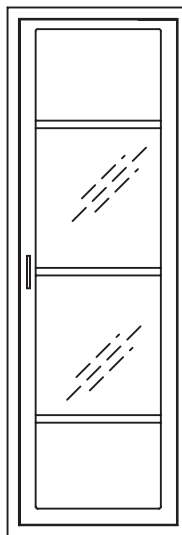
24" Deep Cabinet
H_669-3024
H_669-3624
H_669-4224
H_669-4824



H_667-30
H_667-36
H_667-42
H_667-48

Supply Cabinet
3 Adjustable Shelves
Glazed Glass Doors
70" H x 36" W x 24" D

24" Deep Cabinet
H_667-3024
H_667-4224
H_667-4824



H_673-18
H_683-21
H_683-24

Supply Cabinet
3 Adjustable Shelves
Glazed Glass Door
70" H x 24" W x 24" D

24" Deep Cabinet
H_683-1824
H_683-2124
H_683-2424

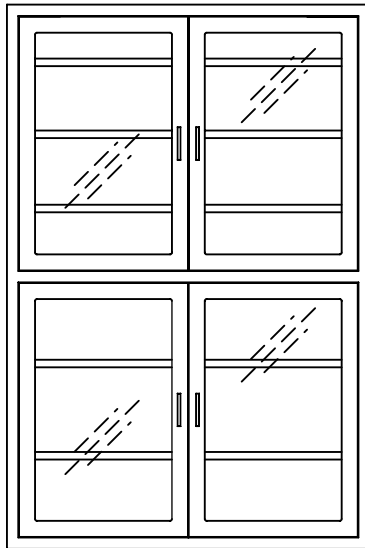
Last two digits of catalog number indicate width. Example: HS660-30.
Use the letter **S** (Stainless Steel) or **P** (Painted) after the H_ to indicate preference.
Example: HS660-30.

Cabinets come standard with wire pull. To specify Recessed Pull, add **R** to end of cabinet number. Example: HS660-30**R**.

For Locking Cabinet, add **L** to cabinet number. Example: HS660-30**L**.

Please note: You must specify lock keying preferences when ordering locks; master keying and grand master keying may incur additional costs. Example: HS660-30**RL** will order a stainless steel cabinet with recessed pulls and locks.

Operating Room Supplies and Equipment Cabinets

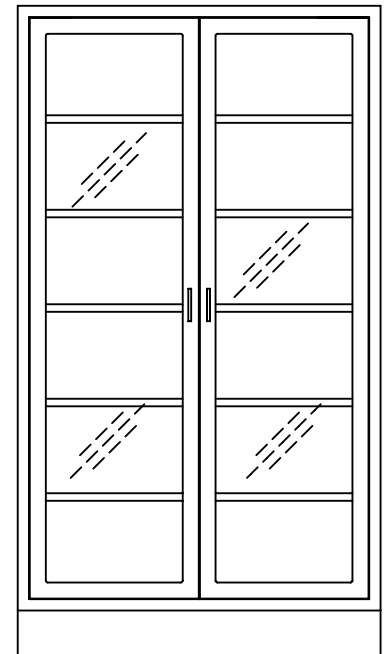


H_680-30
H_680-36
H_680-42
H_680-48

Storage Cabinet
3 Adjustable Top Shelves
2 Adjustable Bottom Shelves
Glazed Glass Doors
72" H x 48" W x 24" D

24" Deep Cabinet

H_680-3024
H_680-3624
H_680-4224
H_680-4824

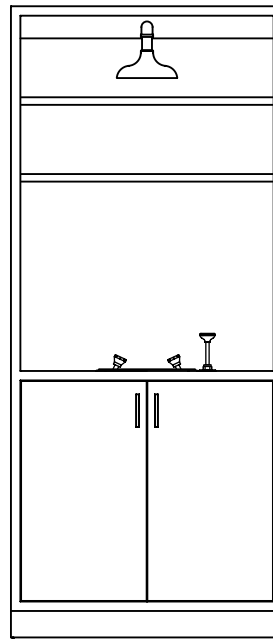


H_666-30
H_666-36
H_666-42
H_666-48

Supply Cabinet
5 Adjustable Shelves
Glazed Glass Doors
Metal Sub-base
86" H x 48" W x 24" D

24" Deep Cabinet

H_666-3024
H_666-3624
H_666-4224
H_666-4824



P150-36
S150-36

Eye Wash/Wash Down Station

Adjustable Shelves
Emergency Shower
Eye Wash
Swing Doors

80" H x 36" W x 22" D

This page was intentionally left blank.