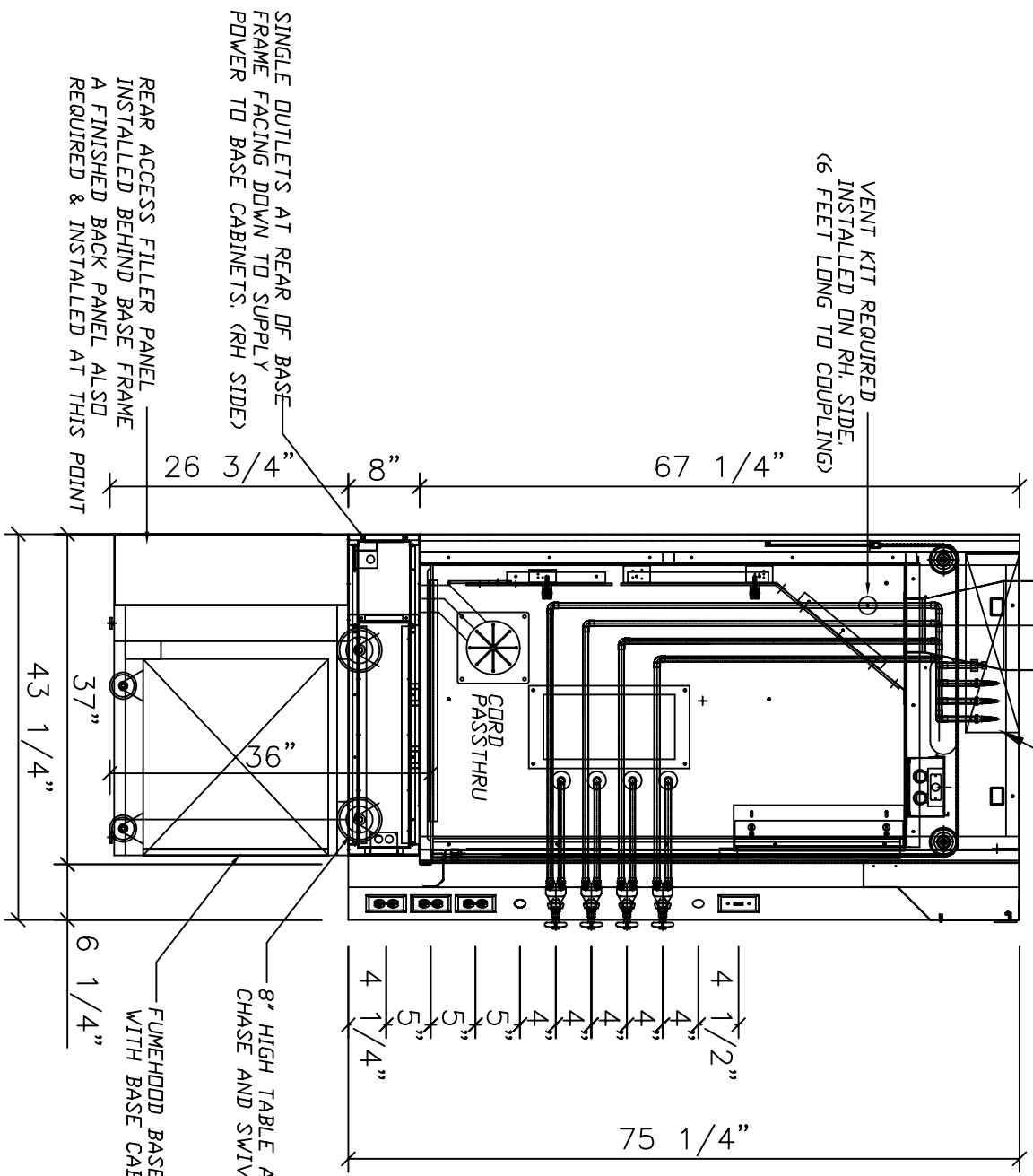


30" x 6" RECT. DUCT COLLAR
 TRANSITION TO 10" DIA. ROUND
 18 Ga. #304 STN.STL.

PLUMBING SERVICES
 SWAGelok HOSE BARBS

VENT KIT REQUIRED
 INSTALLED ON RH. SIDE.
 (6 FEET LONG TO COUPLING)



SINGLE OUTLETS AT REAR OF BASE
 FRAME FACING DOWN TO SUPPLY
 POWER TO BASE CABINETS. (RH SIDE)

REAR ACCESS FILLER PANEL
 INSTALLED BEHIND BASE FRAME
 A FINISHED BACK PANEL ALSO
 REQUIRED & INSTALLED AT THIS POINT

8" HIGH TABLE APRON WITH LIFT
 CHASE AND SWIVEL CASTERS.

FUMEHOOD BASE FRAME SUPPORT
 WITH BASE CAB'T ON CASTERS.

DRAWN BY: <u>JEFF</u> DATE: <u>07.30.03</u>		SCALE	REV.
DEALER: <u>L. F. SYSTEMS, CORP.</u>			
JOB	FACTORY ORDER NO.		
SHEET	OF		