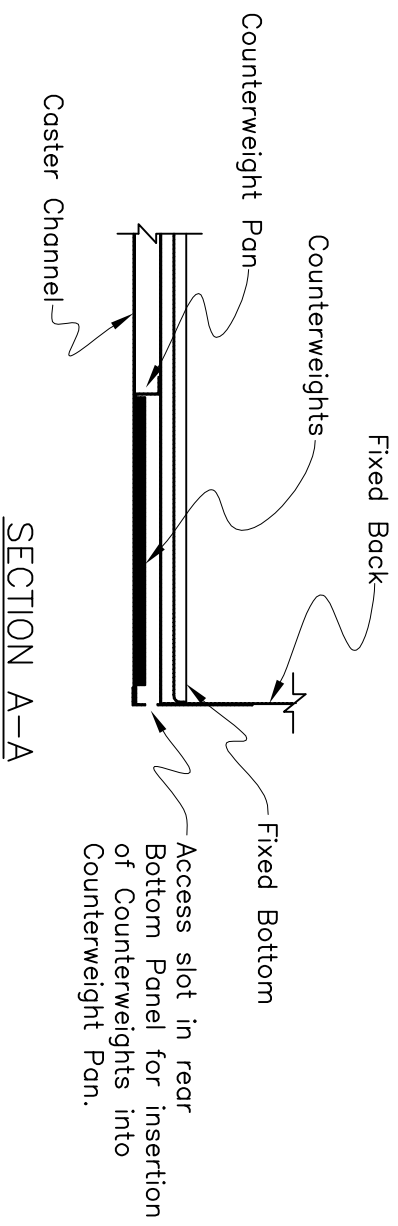
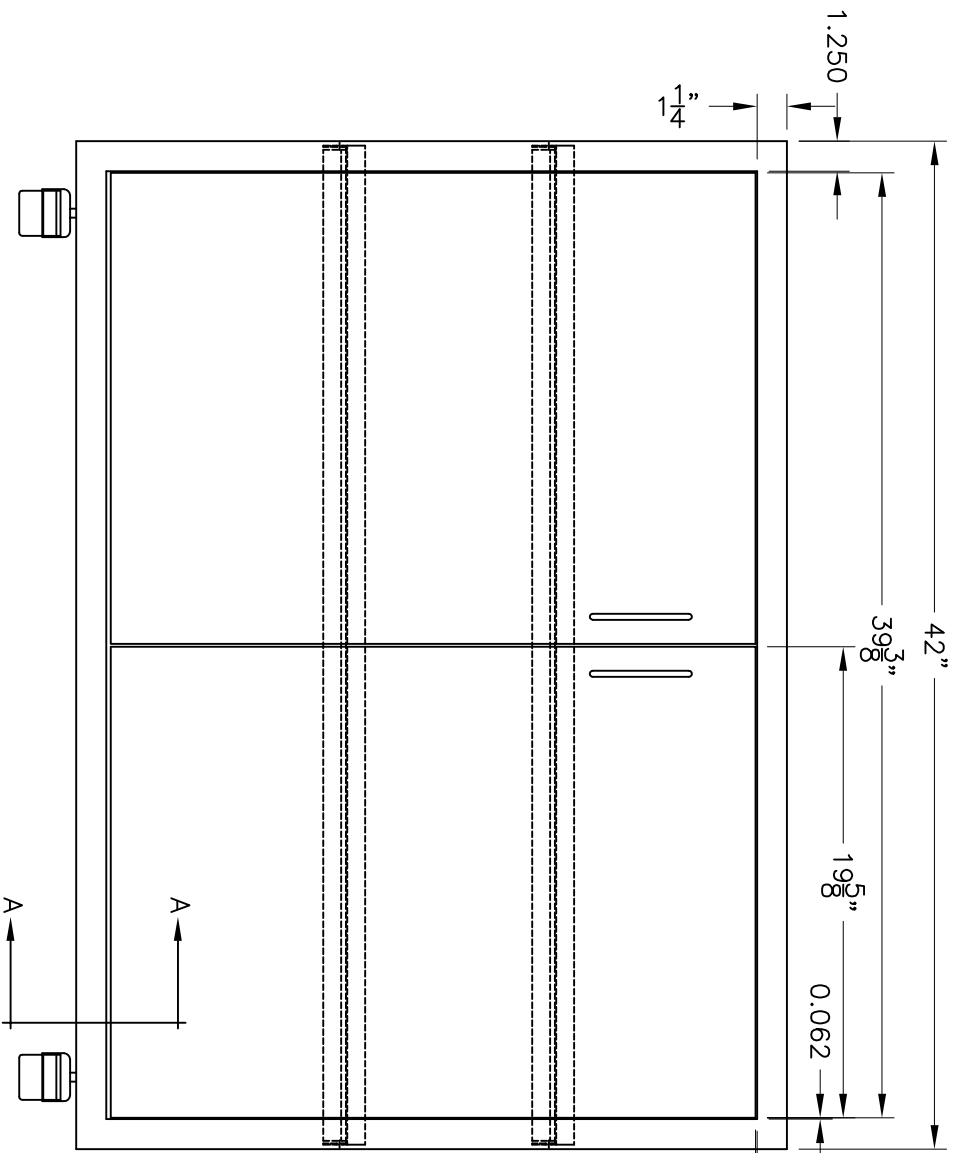


Adjustable Shelf Clip Detail



SECTION A-A

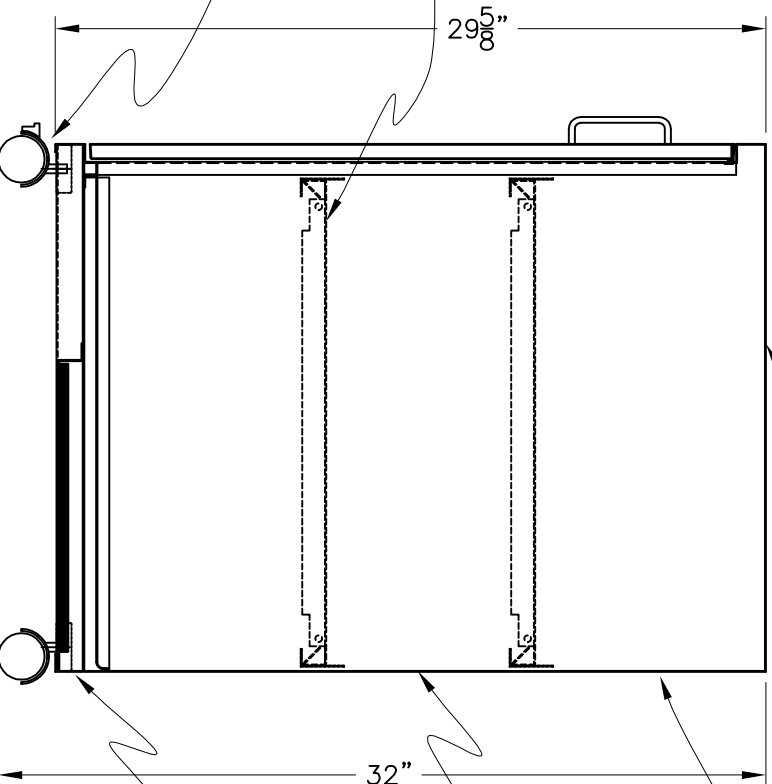
PART NUMBER  
**M1C-42**



0.093

1 15/16" Dia  
Threaded Swivel Stem  
Caster  
75 Lbs Cap Each  
Two with Brake  
Two without Brake  
McMaster-Carr (24215T69)  
and (24215T81 w/ Brake)

Adjustable Shelf  
See Adjustable Shelf  
Clip Detail



18 Gauge Mild Steel  
with no additional holes

18 Gauge Mild Steel  
Case

18 Gauge Mild Steel  
Finished Back

Integral Counterweight  
Pan located under  
Fixed Bottom and  
Caster channels. (See Section A-A)